

DRIVING PANEL

COMANY

DP-50 (I)

Movable partition that is light, easy to use, and focus on its basic function which is “to partition off”.

The lightness, the user friendliness, and also easy to install on a daily basis, were born out of the insistent on its basic function which is “to partition off”. And on top of that, this movable partition is available in various surfacing materials and applicable for many uses, from offices to educational facilities.



The motion mechanism that enables a light and quiet panel movement.

For motion mechanism, using the cross-running X-2 type runner. The resin runner with the built-in bearing, will run smoothly above the aluminum rail. The noise that occurs when the bearing of the runner run directly above the steel rail, gets fewer, achieving a quiet panel movement.

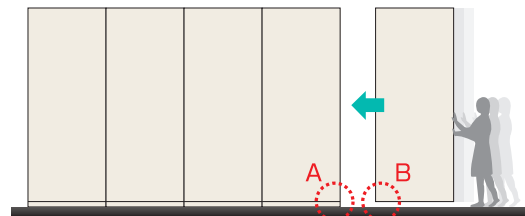


● X-2 runner/ rail For CH3000 or lower

A clean design with no visible dropper.

The dropper that only works during partitioning/panel storing, will be embedded on the side of the panel (standard panel). It is possible to create a clean look on the wall side, where the dropper on the panel surface during partitioning, is invisible.

The mechanism of the dropper that is integrated into the side of the panel



● A : The Dropper

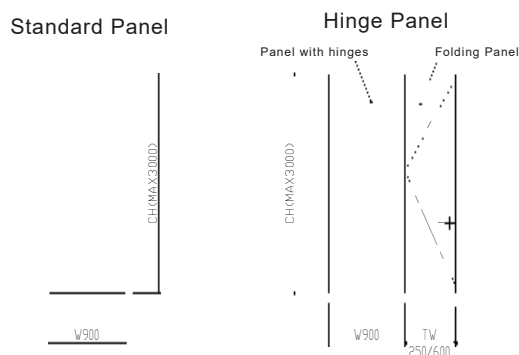


● B : The shield mechanism and the interlocking bush



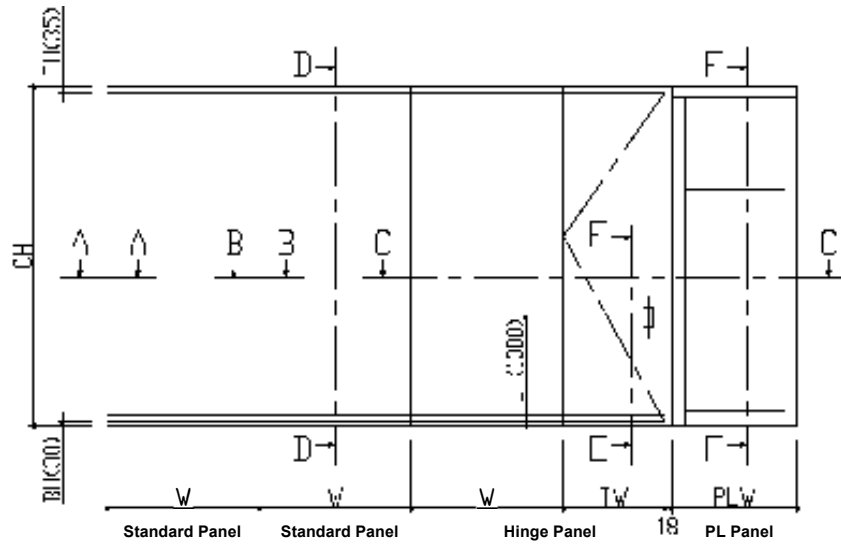
By pushing the bush when installing the panel, the gaps on the floor, will be automatically sealed.

Panel variations

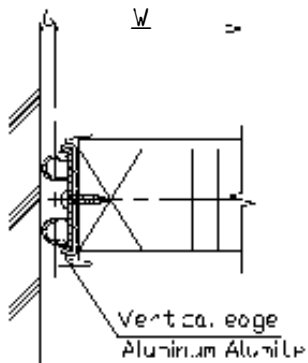


Specifications

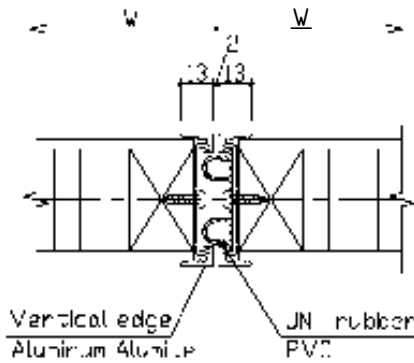
Dimensions	Max height (CH)	3000mm
	Max width (W)	900mm
	Thickness	48mm (Edge probable thickness 52mm)
	Weight	16kg/m ²
Panel	Surface	MDF (2.7mm) • PVC • HPL (High Pressure Laminate)
	Core	Paper core
	Edge	Aluminum (alumite finish)
	JNT rubber/Pressure sealing rubber	Polyvinyl chloride (PVC)
Pressure sealing device	Push-type	
Runner	X-2 type (cross-running method)	
Rail	Aluminum (clear alumite finish)	



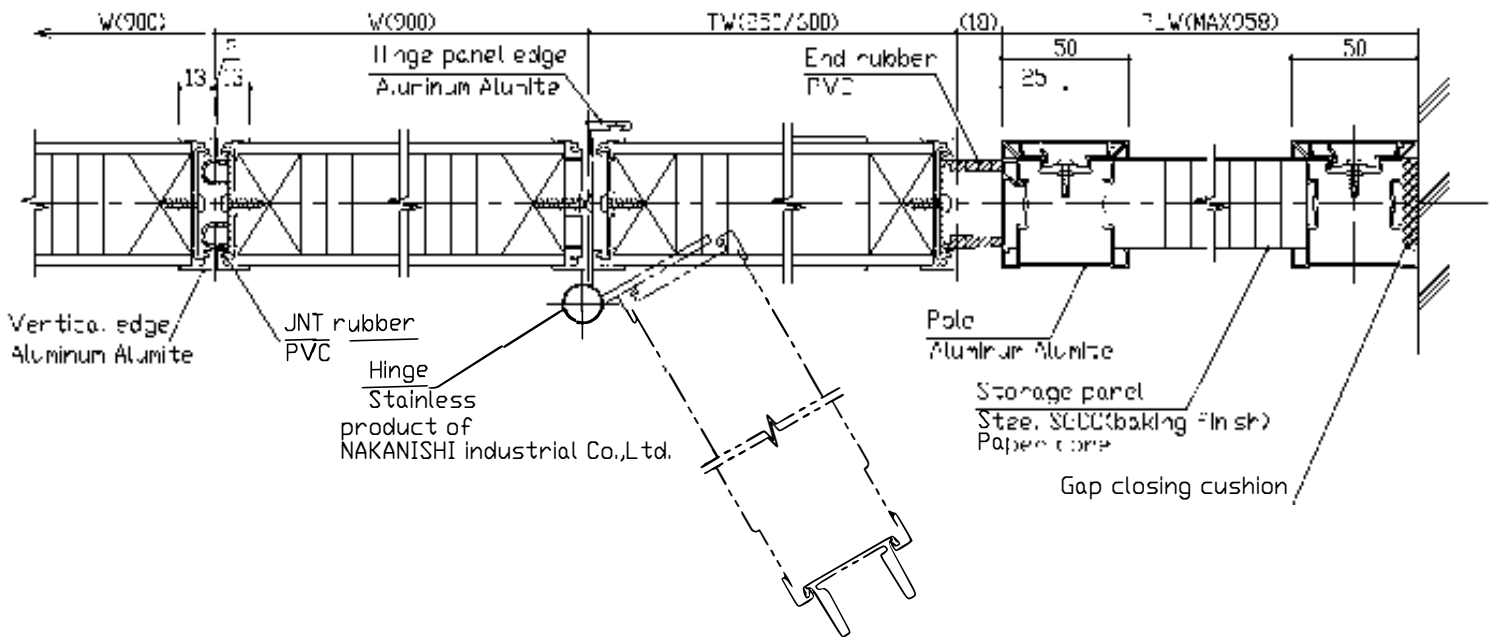
■A-A Front-end alongside wall application

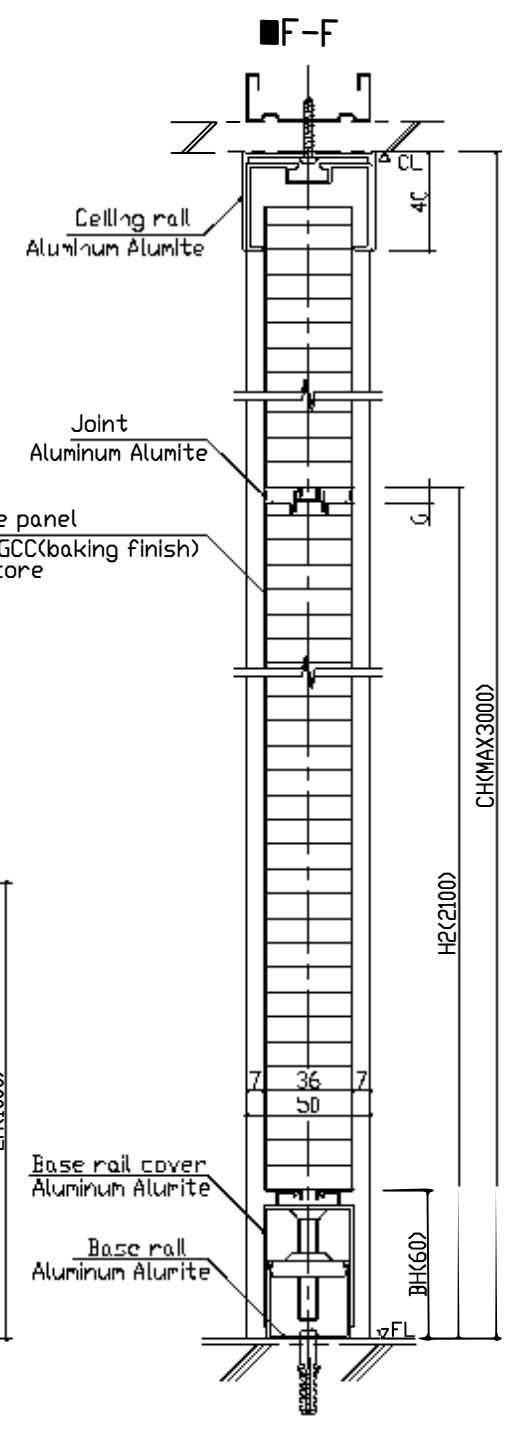
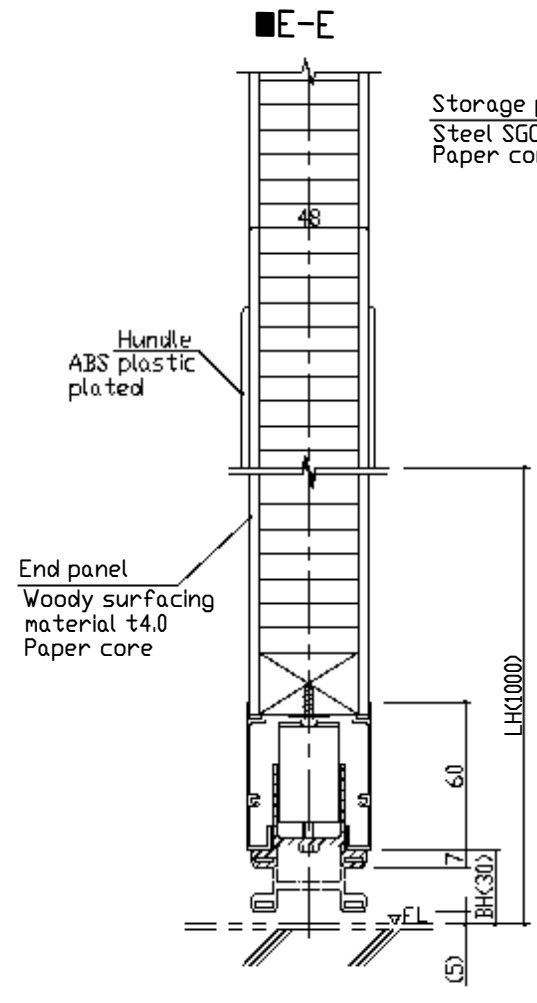
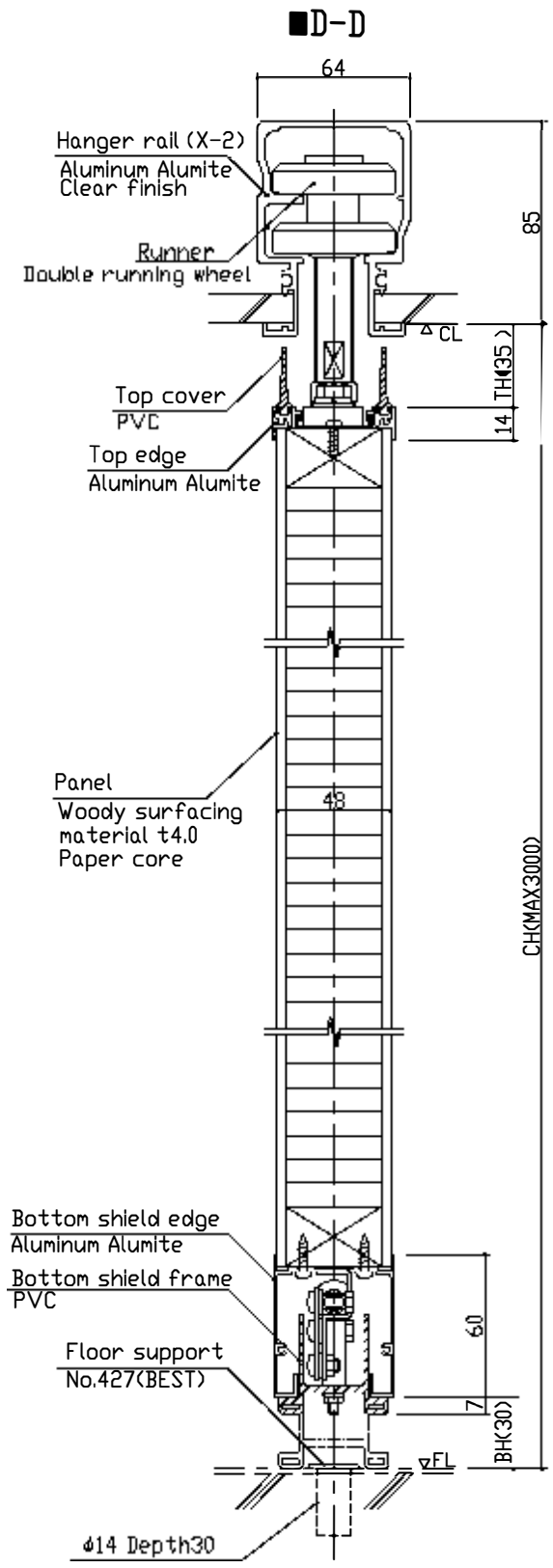


■B-B Standard panel



■C-C

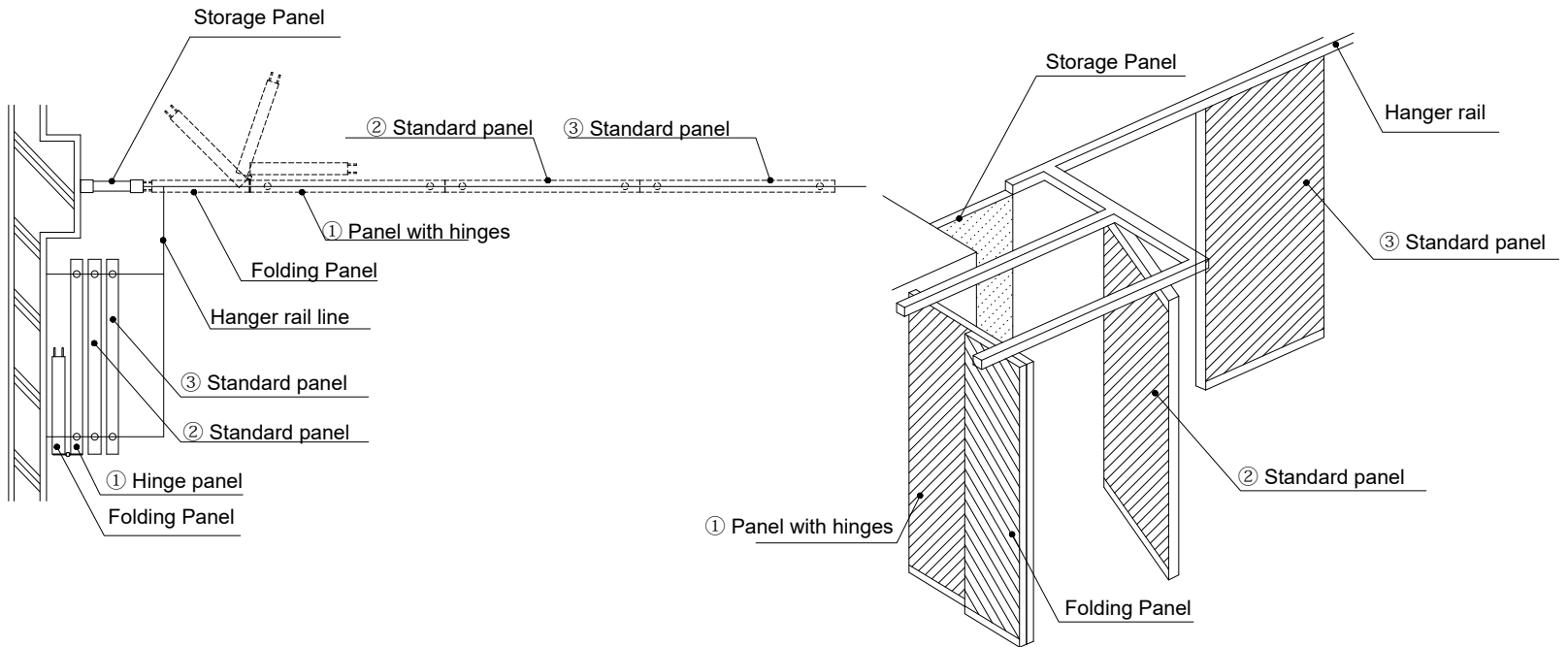




● Standard storage type

■ C type

This is a method where the panels are being guided out from the partitioning line and the storage unit is separated independently. The storage unit is also can be made as a storage shed.



COMANY.INC

www.comany.net

Head Office

1-93, Kougyou-Danchi Komatsu City, Ishikawa-Japan



www.sumbersetia.com

Showroom :

Jl. Tomang Raya No. 15, Jakarta-11440, Indonesia p.
(+62-21) 5601078 / 79 (Hunting)

Branch :

Jl. Ngemplak 30, Komp.Ambengan Plaza Blok B No.21
Surabaya-Indonesia
p.(+62-31) 5451133 (Hunting) p.(+62-31) 5459331