

MOVING PANEL

DRIVING PANEL

DP series



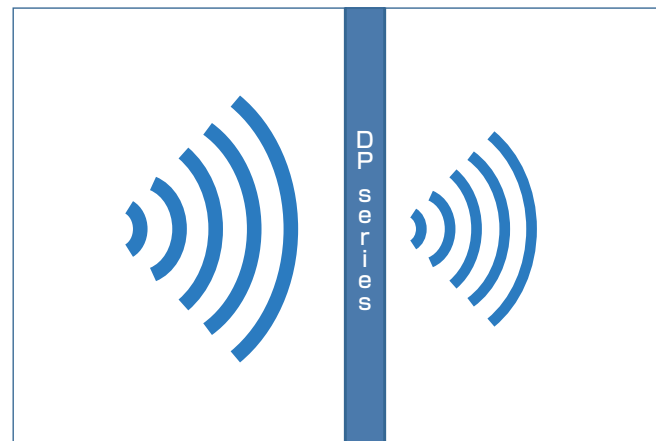
Introducing from our extensive lineup, COMANY's products that are excellent in design and high performance.

For driving panel, we provide the most suitable movable partition from our wide range of product lineup. From driving panel for supersize spaces such as convention hall, exhibition hall and other places with a very high ceiling-height, to driving panel for spaces that required high sound-insulation performance such as office meeting rooms and classroom space that can immediately respond to diversified learning contents.



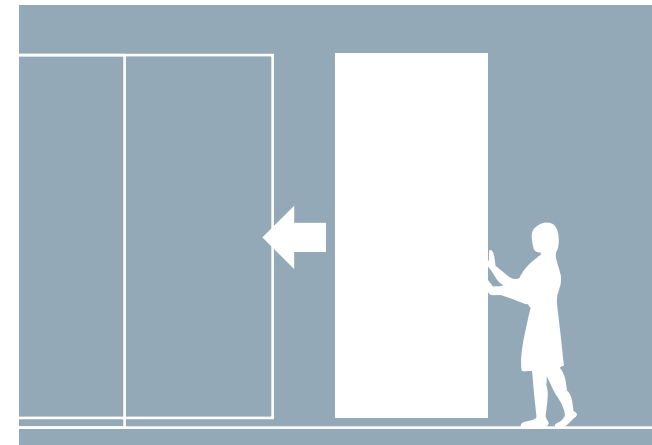
Sound insulation performance is very important, and can be called as the soul of the movable partition.

Our panel mechanism is made so that the sound is hard to transmit, with COMANY's one of a kind technology, as the result of research on sound insulation for many-many years.



Simplicity of use that is user friendly, with our one-touch operation mechanism.

Since the floor and the ceiling surfaces will be insulated only by pushing the pressure sealing device at the tip of the panel, we can install and remove it speedily.



Panel design that is a result of pursuing "cleaner" and "simpler" design

The implementation of cleaner and simpler design, with "Edgeless Design" that makes the joint between panels, less noticeable.



Product lineup

High-sound-insulation type

DP-80
Steel panel type



A breakthrough movable partition that demonstrates excellent sound insulation performance, that is quiet and easy to move, along with its capability to be used for spaces with ceiling height up to 5m.





Thin panel with sound-insulation type

DP-60S
Steel panel type



DP series as our flagship model, holds the combination of simple panel design, excellent user friendliness, and high sound insulation performance.



Panel thickness	80	65
Max height	5000	4000
Max width	1180	1180
Panel mass	36~47kg/m ²	30~39kg/m ²
Surface finish	Hot-dip galvanized steel sheet	Hot-dip galvanized steel sheet
Incombustible performance	Certified incombustible product	Certified incombustible product
Pressure sealing system	 One-touch pressure sealing + Rotation handle method	 One-touch pressure sealing + Rotation handle method
Published page	P5~	P5~

*1: Depends on the type, the specification for height is max. 4000mm, therefore please confirm in advance.

*2: For ceiling height up to 3000mm, can be accommodated by panels with width up to 1200mm.

Please operate the movable partition, with more than 2 persons. (For DP-50 and DP-30, more than 1 person)

High-sound-insulation type Thin panel with sound-insulation type

DP-80/DP-60S

Our flagship model, featuring excellent design and high functionality

Remarkable user friendliness that comes from simple panel design without edge, and its one-touch pressure sealing system. And furthermore, the flagship model of DP series, equipped with its industry-leading high sound-insulation performance.



- DP-80 — Steel panel type
- Glass panel type (single/twin glass)
- DP-60S — Steel panel type
- Glass panel type (single glass)

High sound-insulation doors as our standard products

We ensure high performance in sound insulation as our standard specification, and to make the most suitable use of space, according to the intended use.

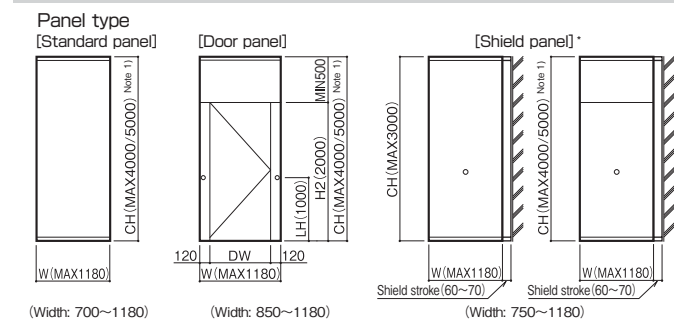
● Sound transmission loss (500Hz)
Sound-insulation doors
DP-60S : 30.0dB DP-80 : 34.0dB

● We also provide double doors type
 *Optional

Lever handle

*The above panels, have the CAPS (acoustic panel) specification.

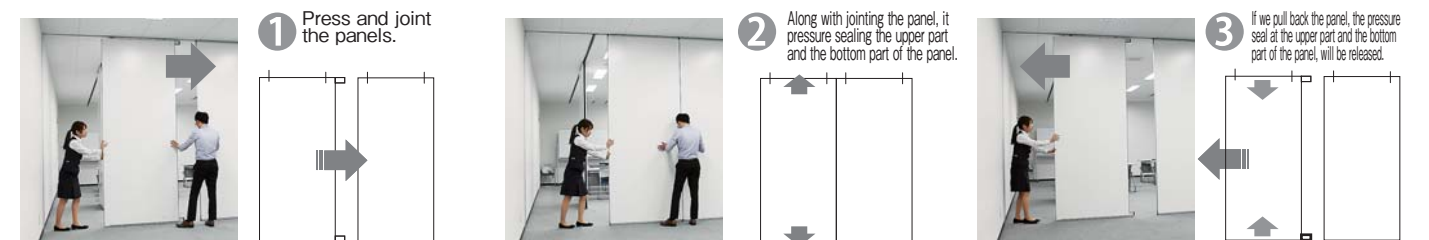
Panel variations



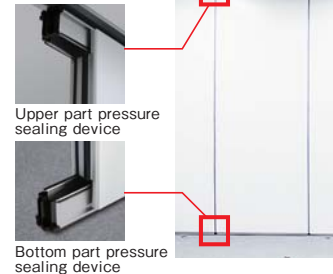
Note 1) For panels with ceiling height more than 3000mm, will be jointed in the middle. As for the runner/rail, will use the X-3 type.
 *Shield Panel : is the panel that sealing the gaps on the ceiling, floor and wall at the end of the partitioning process, and completing the partition installation. By rotating the handle in one place, we can simultaneously seal the ceiling, the floor, and the wall. Available for steel panel only.

Easy to install "One-touch pressure sealing"

As the implementation of one-touch pressure sealing mechanism, we can pressure seal the upper part and the bottom part of the panel by pushing the panel, and we can release it by pulling back the panel. *Exclude shield panel and door panel



● One-touch pressure sealing device



● The fixation of shield panel

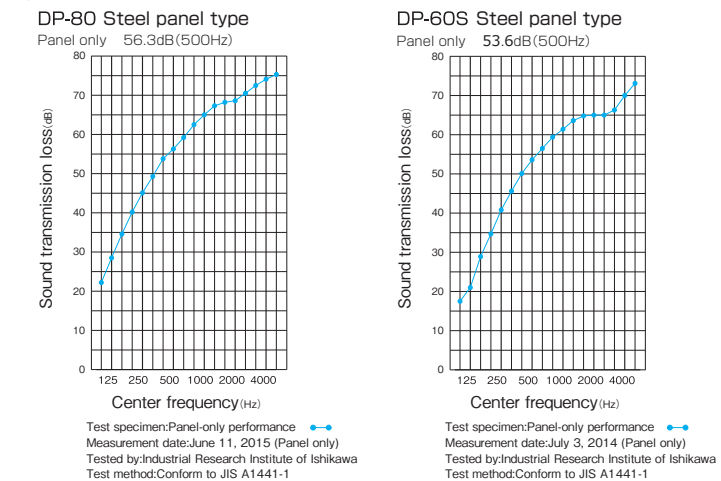


You can watch the one-touch pressure sealing operation procedure on video.

Sound Insulation Performance

The pursuit of partition with sound insulation performance that is on a level with large-size moving wall, that can create "efficient and comfortable space" in various utility form.

● Sound transmission loss test data



Note) The above data, is the data that was measured at the test laboratory. Therefore, it is not guaranteed figures. Regarding the sound insulation performance after the construction work at the designated place, varies depending on the construction environment (the structure of the room, the condition of the interior finishing, the proportion of the equipments, etc).

Runners/ Rails



- X-2 runner/ rail For CH3000 or lower
- X-3 runner/ rail For CH3000 or higher

Certified incombustible material

The Minister of Land, Infrastructure and Transportation certification number NM-3212

Specifications

	DP-80 (Steel)	DP-80 (Glass)	DP-60S (Steel)	DP-60S (Glass)
Dimensions: Max height (CH)	5000mm	4000mm	4000mm	
Max width (W)	1180mm Note 2)	1200mm	1180mm Note 2)	1200mm
Panel Thickness	80mm		65mm	
Weight: Steel panel	36~47kg/m ²	—	30~39kg/m ²	—
Full Glass panel	—	30kg/m ²	—	28kg/m ²
4-tiered glass	—	27kg/m ²	—	24kg/m ²
Surface	Galvanized steel plate (SGCC); t0.6mm (baking finish) Note 3)			
Panel: Backing material Lining	Gypsum board t12.5mm		Gypsum board t9.5mm	
Runner	Polyvinyl chloride (PVC)/ TPE			
Glass frame	—	Galvanized steel/ Aluminum alloy	—	Galvanized steel/ Aluminum alloy
Pressure sealing device	One-touch pressure sealing + rotation-handle type pressure sealing device			
Runner Note 4)	X-2 (cross running type)			
Rail	Aluminum alloy (clear alumite finish)			

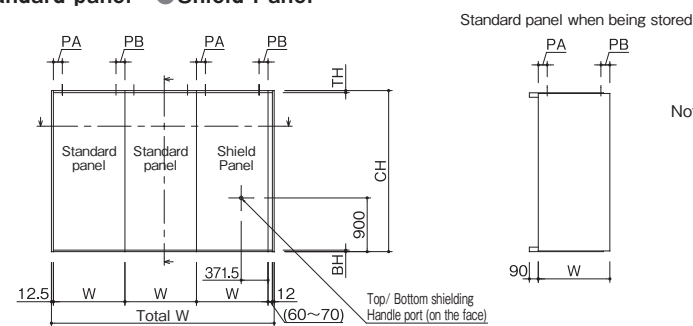
Glass thickness selection

Height (CH)	Single glass		Twin glass	
	Full glass	Stacking	Full glass	Stacking
~2100mm	6mm	5mm	6mm	5mm
2101~3000mm	6mm·8mm	5mm	6mm·8mm	5mm
3001~4000mm	8mm	5mm	8mm	5mm

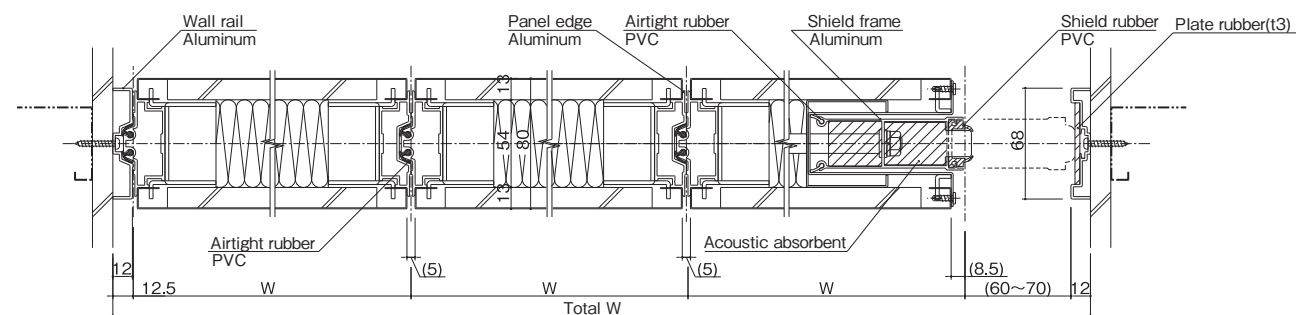
Note 2) We can take order for panel width up to 1200mm, by changing the surfacing material to SGCC with thickness 0.8mm.
 Note 3) *Fabric finishes is also available (Custom order, Non-incombustible materials). Fabric finishes is an optional specification. For detailed informations regarding panel specifications etc, please contact our sales staff.
 *Paint finishes is also available (custom order).
 Note 4) In case the weight of the panel is more than 150kg per panel, the applicable runner is the X-3 type. *Panels are assembled on site.

[High-sound-insulation type] DP-80 Steel panel

● Standard panel ● Shield Panel

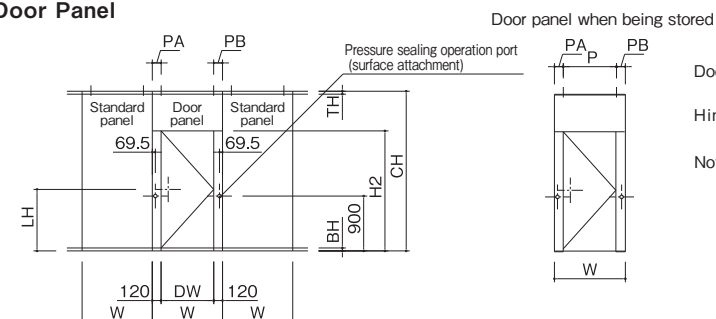


Note: The middle joint, will be inserted on the following positions:
 Ceiling height $3000\text{mm} < \text{CH} \leq 4000\text{mm}$: at the position of 2500mm.
 Ceiling height $4000\text{mm} < \text{CH} \leq 5000\text{mm}$: at the position of 2900mm.
 In case the weight of the panel is more than 150kg per panel, the applicable runner/rail is the X-3 type. (Please refer to page 26)
 For detailed informations, please contact our sales staff.



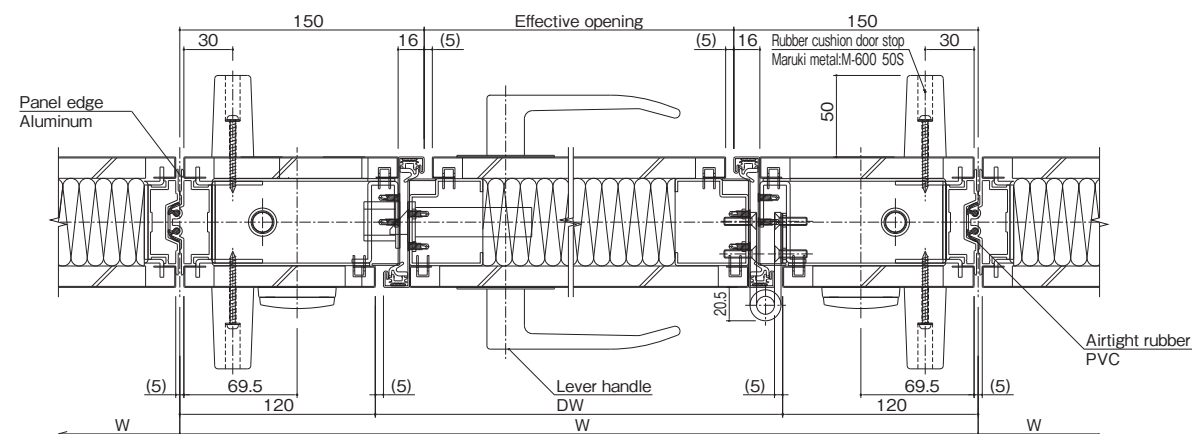
* In case the ceiling height is more than 3000mm, the internal reinforcement may vary.

● Door Panel

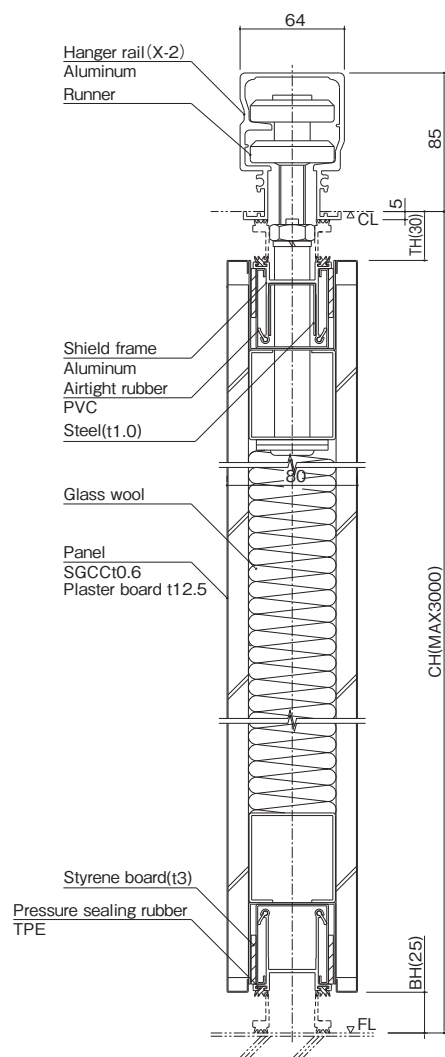


Door handles: TL-B101 BS=60 (product of NAGASAWA Manufacturing Co., Ltd.)
 * MIWA LA Lock is also available.
 Hinges: SUS-2K-6-4t (product of NAKANISHI Industrial Co., Ltd.)

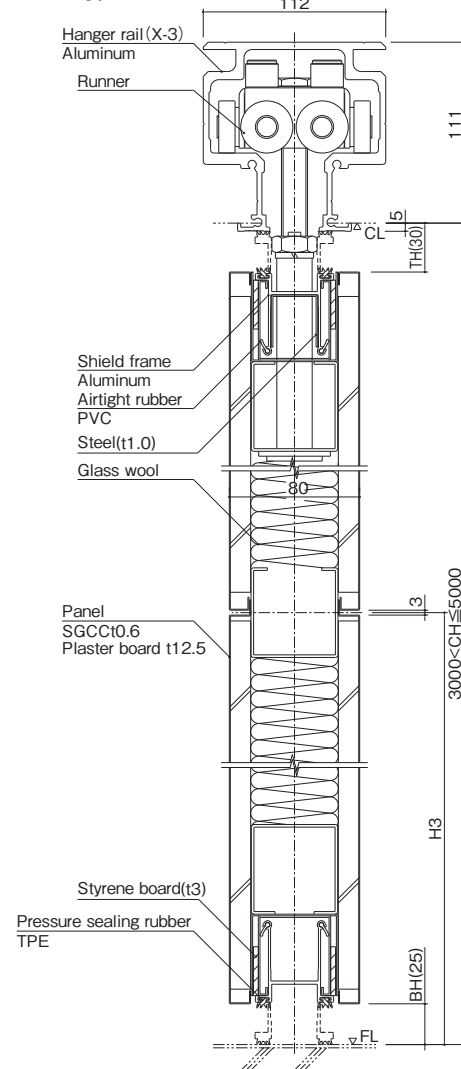
Note: The middle joint, will be inserted on the following positions:
 Ceiling height $3000\text{mm} < \text{CH} \leq 4000\text{mm}$: at the position of 2500mm.
 Ceiling height $4000\text{mm} < \text{CH} \leq 5000\text{mm}$: at the position of 2900mm.
 In case the weight of the panel is more than 150kg per panel, the applicable runner/rail is the X-3 type. (Please refer to page 26)
 For detailed informations, please contact our sales staff.



■ X-2Types Runner/ Rail

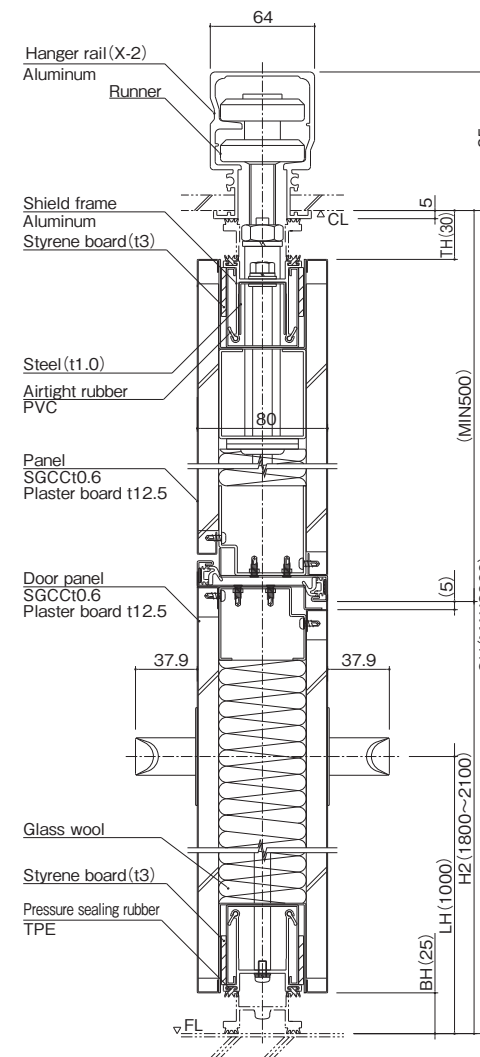


■ X-3Types Runner/ Rail

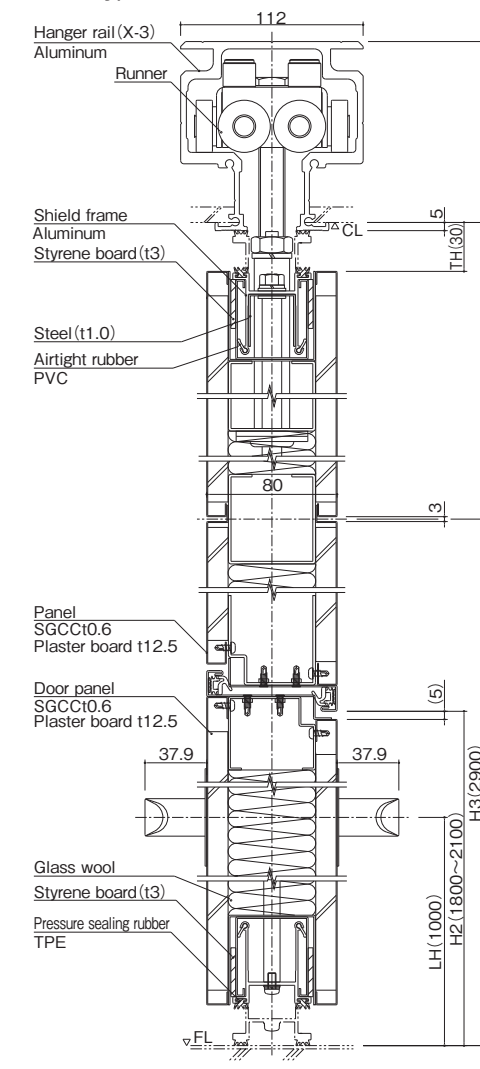


Note: For panels with ceiling height more than 3000mm, will be jointed in the middle.
 And, the applicable runner/rail, is the X-3 type. (Please refer to page 26)

■ X-2Types Runner/ Rail



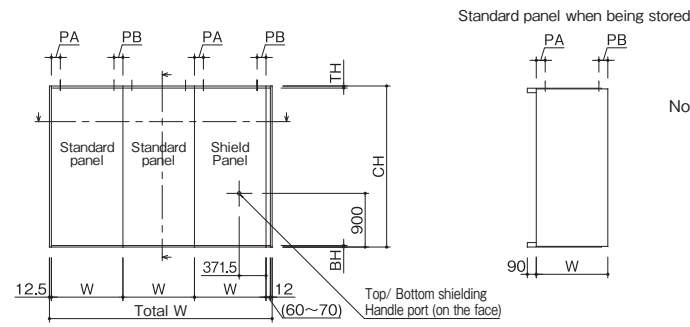
■ X-3Types Runner/ Rail



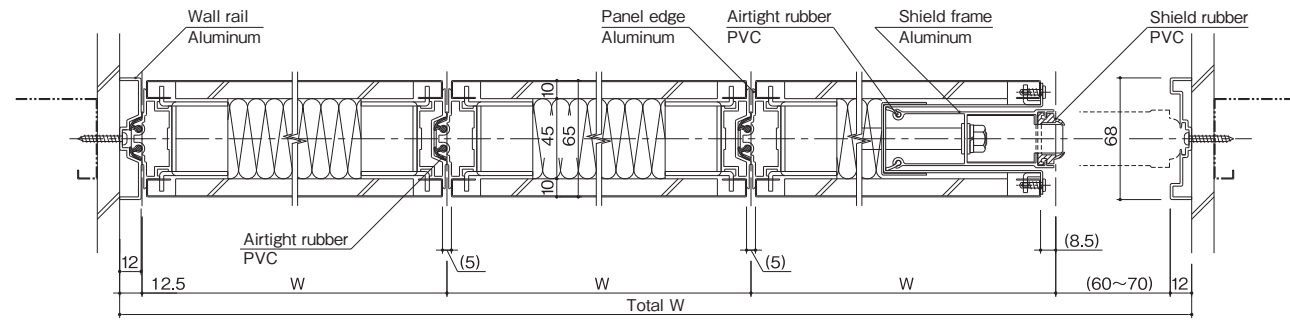
Note: For panels with ceiling height more than 3000mm, will be jointed in the middle.
 And, the applicable runner/rail, is the X-3 type. (Please refer to page 26)

[Thin sound-insulation type] DP-60S Steel Panel

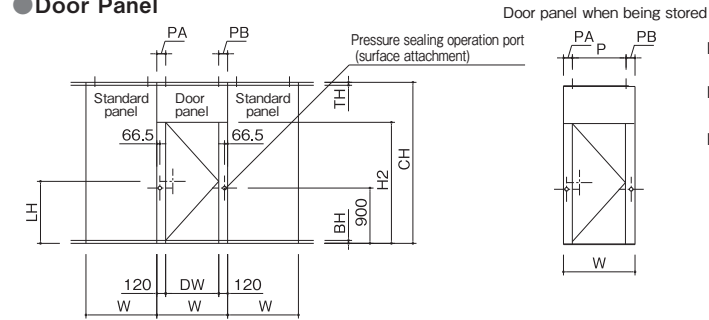
●Standard panel ●Shield Panel



Note: The middle joint, will be inserted on the following positions:
 Ceiling height 3000mm<CH≤4000mm : at the position of 2500mm.
 Ceiling height 4000mm<CH≤5000mm : at the position of 2900mm.
 *In case the weight of the panel is more than 150kg per panel, the applicable runner/rail is the X-3 type. (Please refer to page 26)
 For detailed informations, please contact our sales staff.

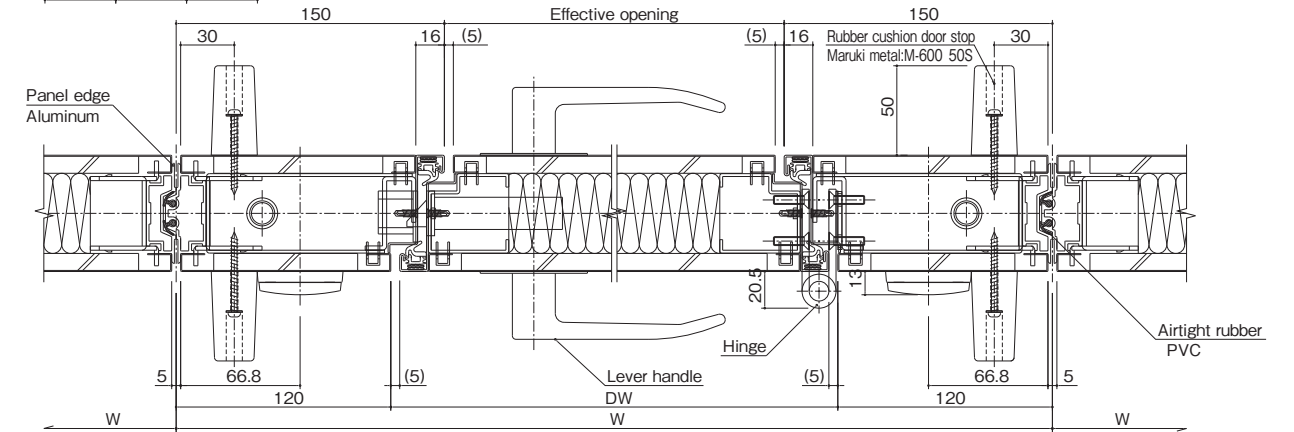


●Door Panel

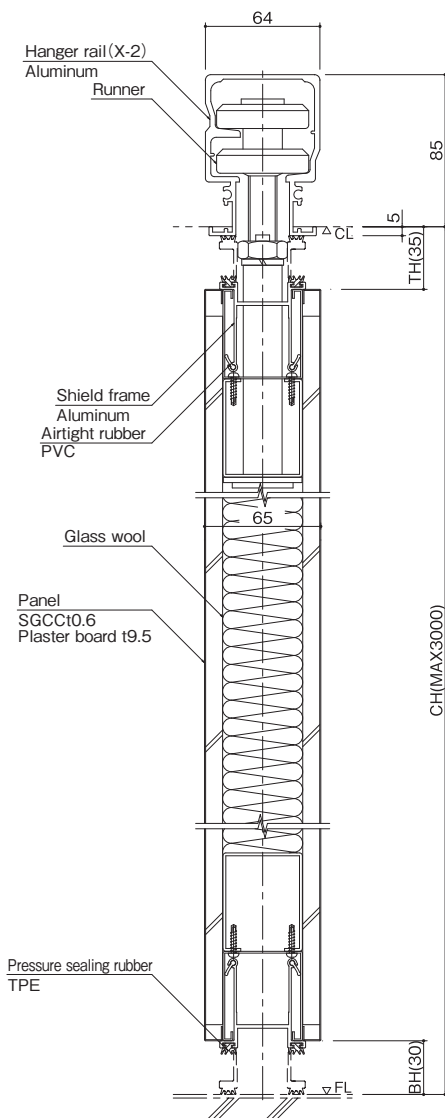


Door handles: TL-B101 BS=60 (product of NAGASAWA Manufacturing Co., Ltd.)
 * MIWA LA Lock is also available.
 Hinges: SUS-2K-6-4t (product of NAKANISHI Industrial Co., Ltd.)

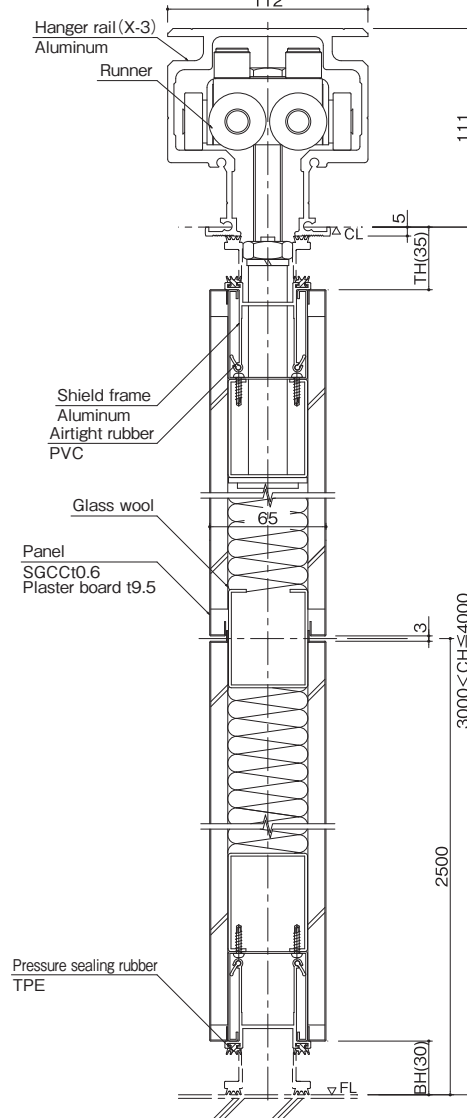
Note: The middle joint, will be inserted on the following positions:
 Ceiling height 3000mm<CH≤4000mm : at the position of 2500mm.
 Ceiling height 4000mm<CH≤5000mm : at the position of 2900mm.
 *In case the weight of the panel is more than 150kg per panel, the applicable runner/rail is the X-3 type. (Please refer to page 26)
 For detailed informations, please contact our sales staff.



■X-2Types Runner/ Rail

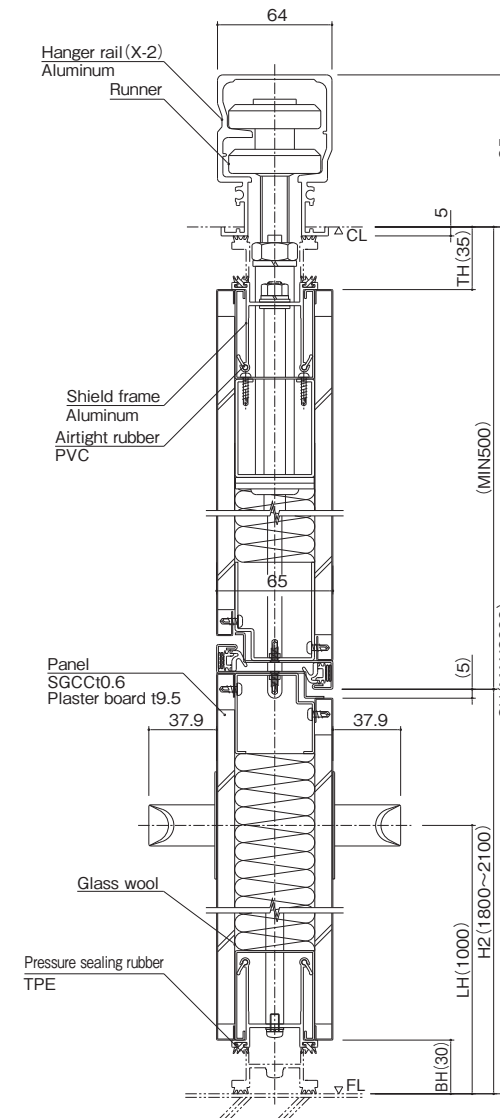


■X-3Types Runner/ Rail

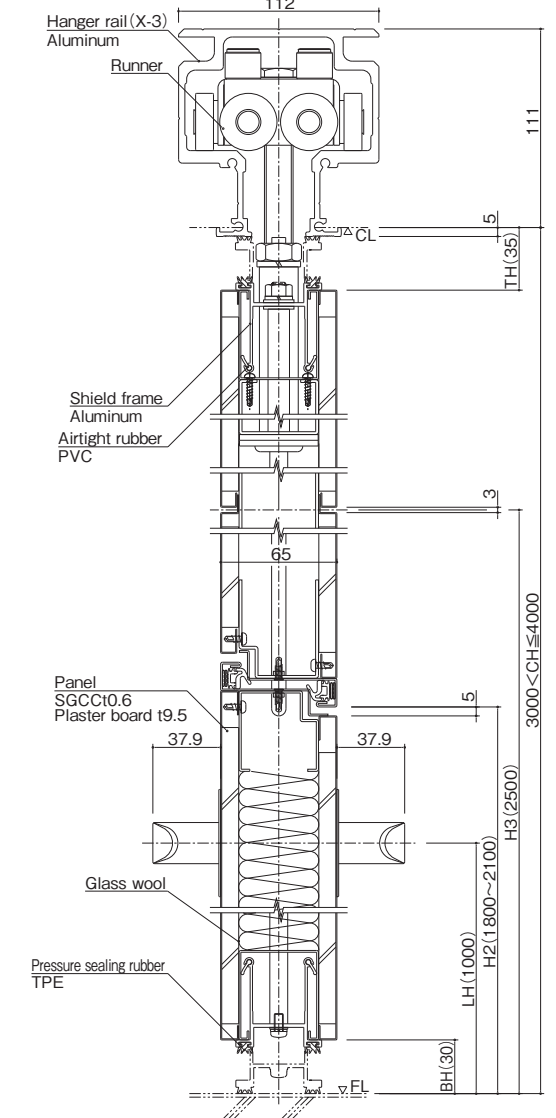


Note: For panels with ceiling height more than 3000mm, will be jointed in the middle.
 And, the applicable runner/rail, is the X-3 type. (Please refer to page 26)

■X-2Types Runner/ Rail



■X-3Types Runner/ Rail



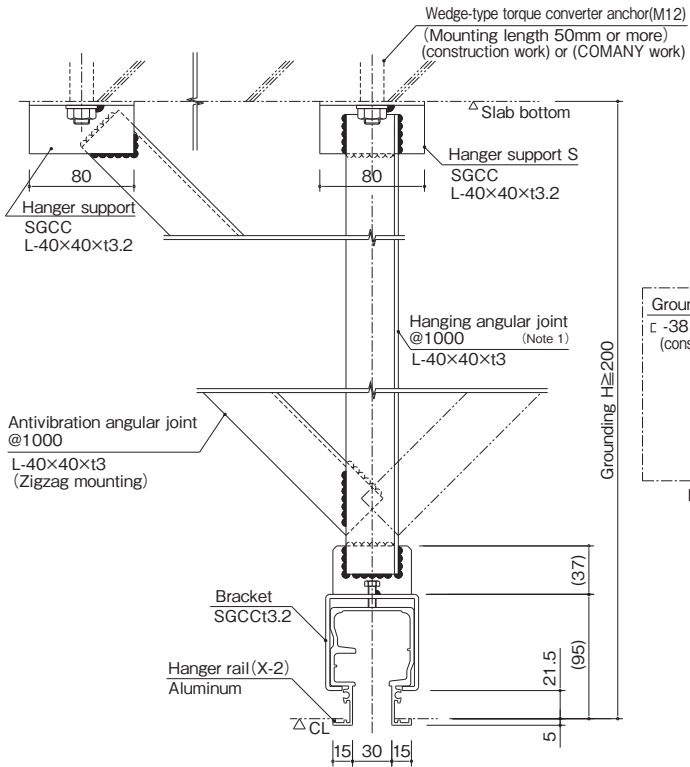
Note: For panels with ceiling height more than 3000mm, will be jointed in the middle.
 And, the applicable runner/rail, is the X-3 type. (Please refer to page 26)

X-2/ X-3 Types Rail grounding work examples [joining]

■ Installation on Ferroconcrete Ceilings

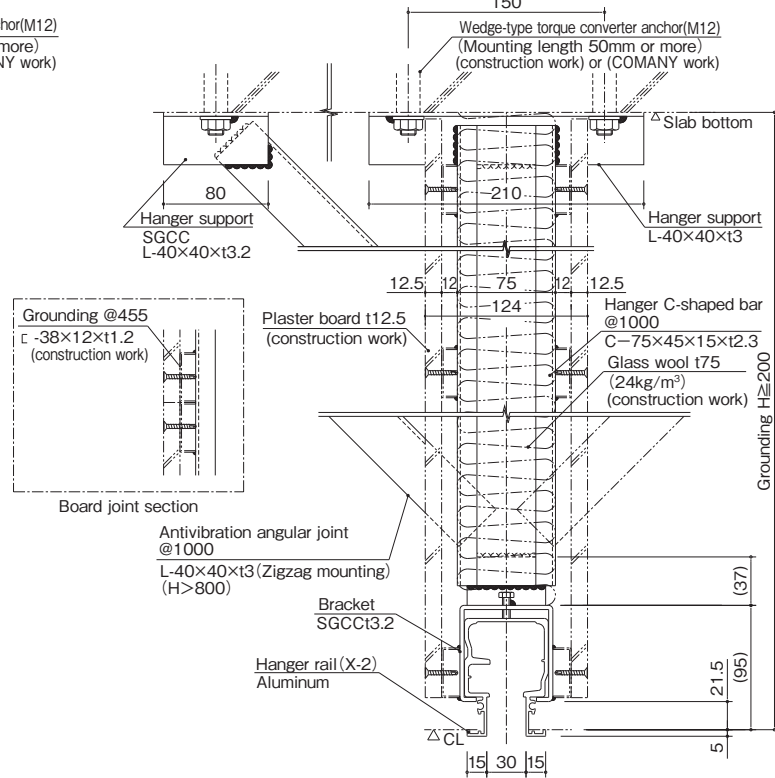
■ X-2 Types

Example of the standard in-ceiling backing structure



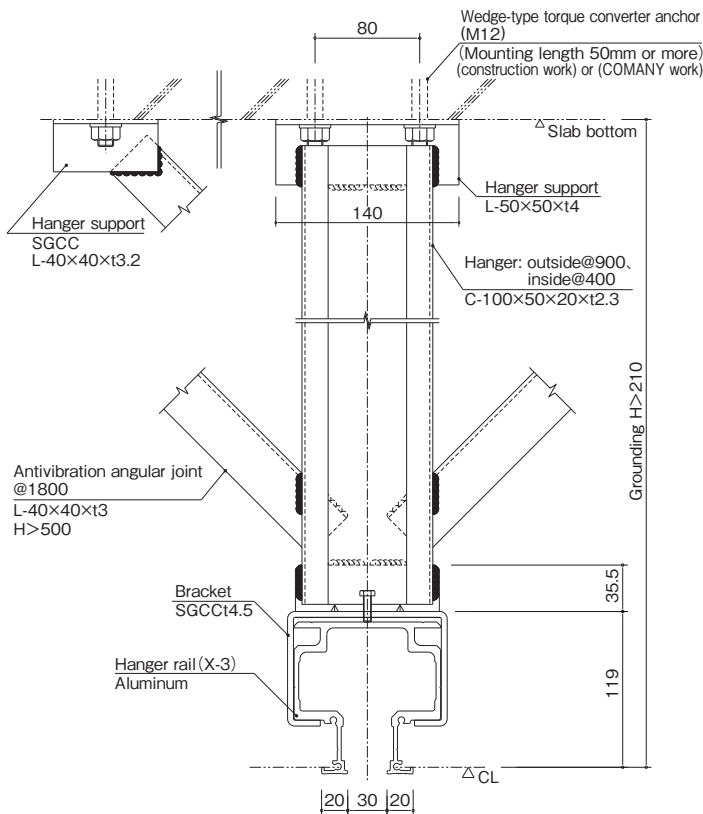
Note 1: The storage unit, is @300.
Note 2: Antirust paint is JIS K 5621 for general buildings and JIS K 5674 for public buildings. SGCC is without antirust paint.

Example of in-ceiling soundproof wall backing structure



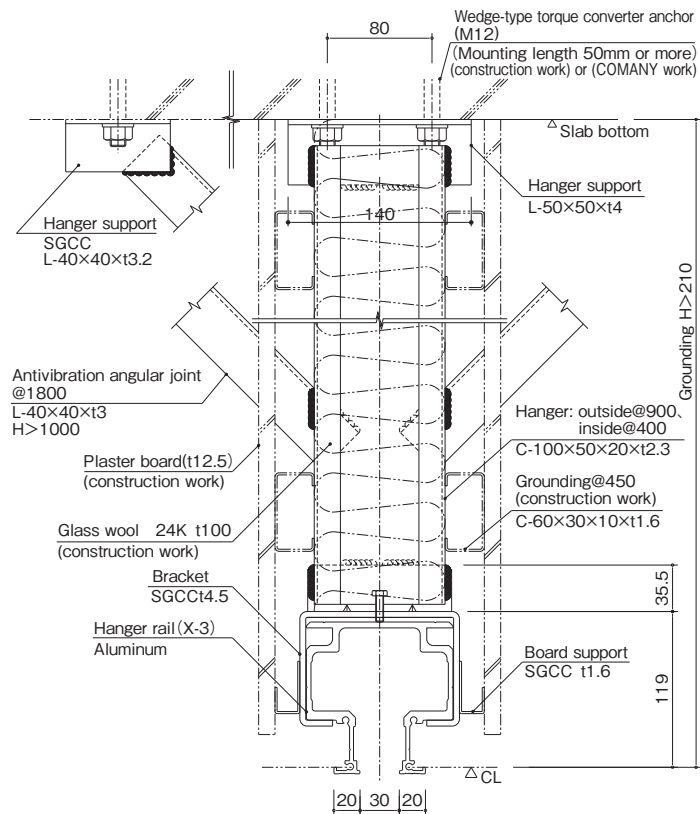
■ X-3 Types

Example of the standard in-ceiling backing structure



Note 1: Antirust paint is JIS K 5621 for general buildings and JIS K 5674 for public buildings. SGCC is without antirust paint.

Example of in-ceiling soundproof wall backing structure



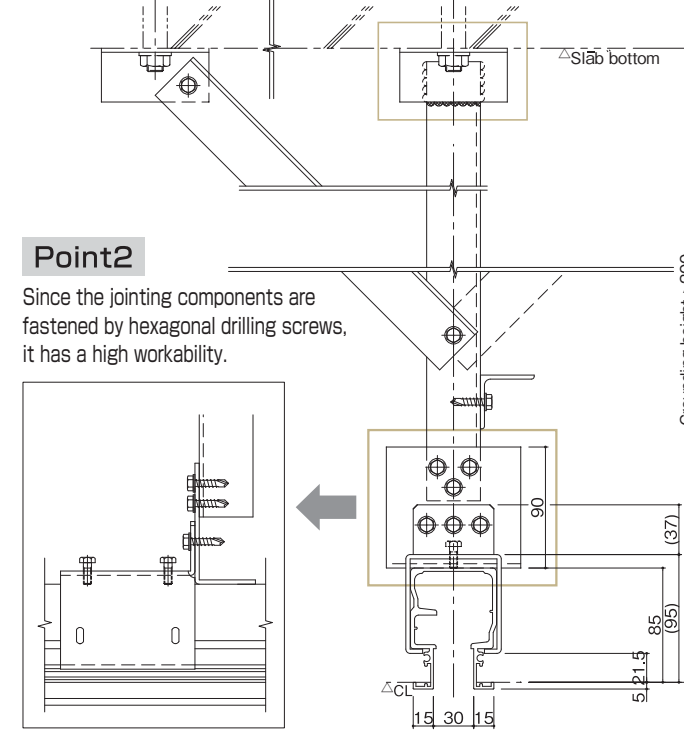
*The ceiling grounding, will affect the installation of the panels greatly. A design that is made according to the conditions of the installation site and the weight of the panel, is required. And since this design requires ample studies in advance, please consult with us.

■ Weldless construction method

Since this construction method does not require hot work process, it is perfect for existing buildings, and especially for construction at multi-tenant buildings. This construction method has a high workability, where the installation can be done by fastening the components that were welded at the factory, with hexagonal drilling screws, on the construction site.

[The example of X-2 type rail]

Point 1 Since the components were welded at the factory, it can be installed even on places where welding process is not allowed.

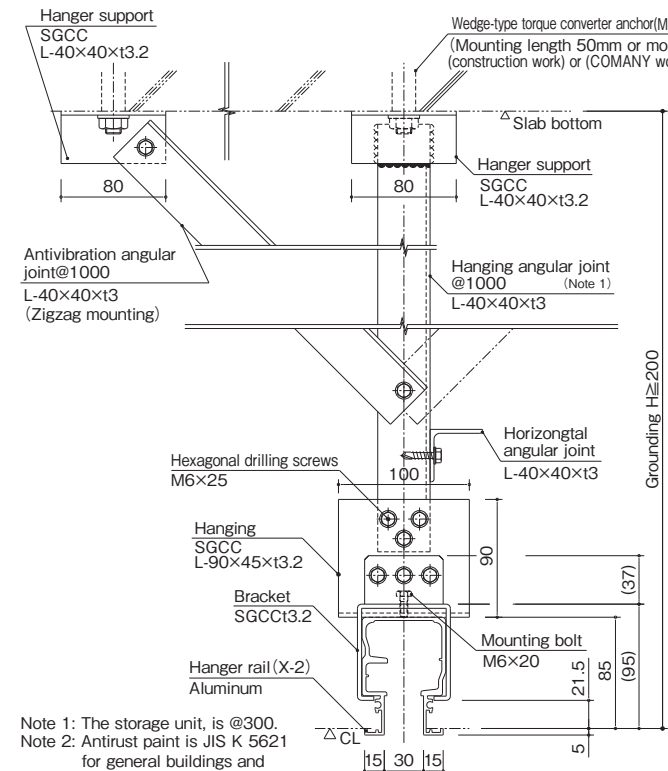


Point 2 Since the jointing components are fastened by hexagonal drilling screws, it has a high workability.



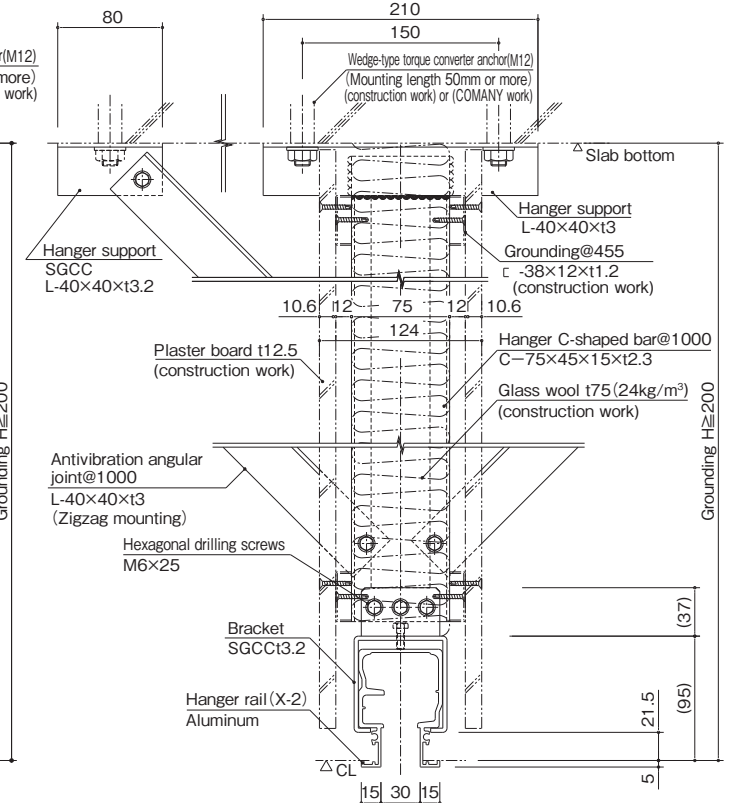
■ X-2 Types (Weldless construction method)

Example of the standard in-ceiling backing structure



Note 1: The storage unit, is @300.
Note 2: Antirust paint is JIS K 5621 for general buildings and JIS K 5674 for public buildings. SGCC is without antirust paint.

Example of in-ceiling soundproof wall backing structure

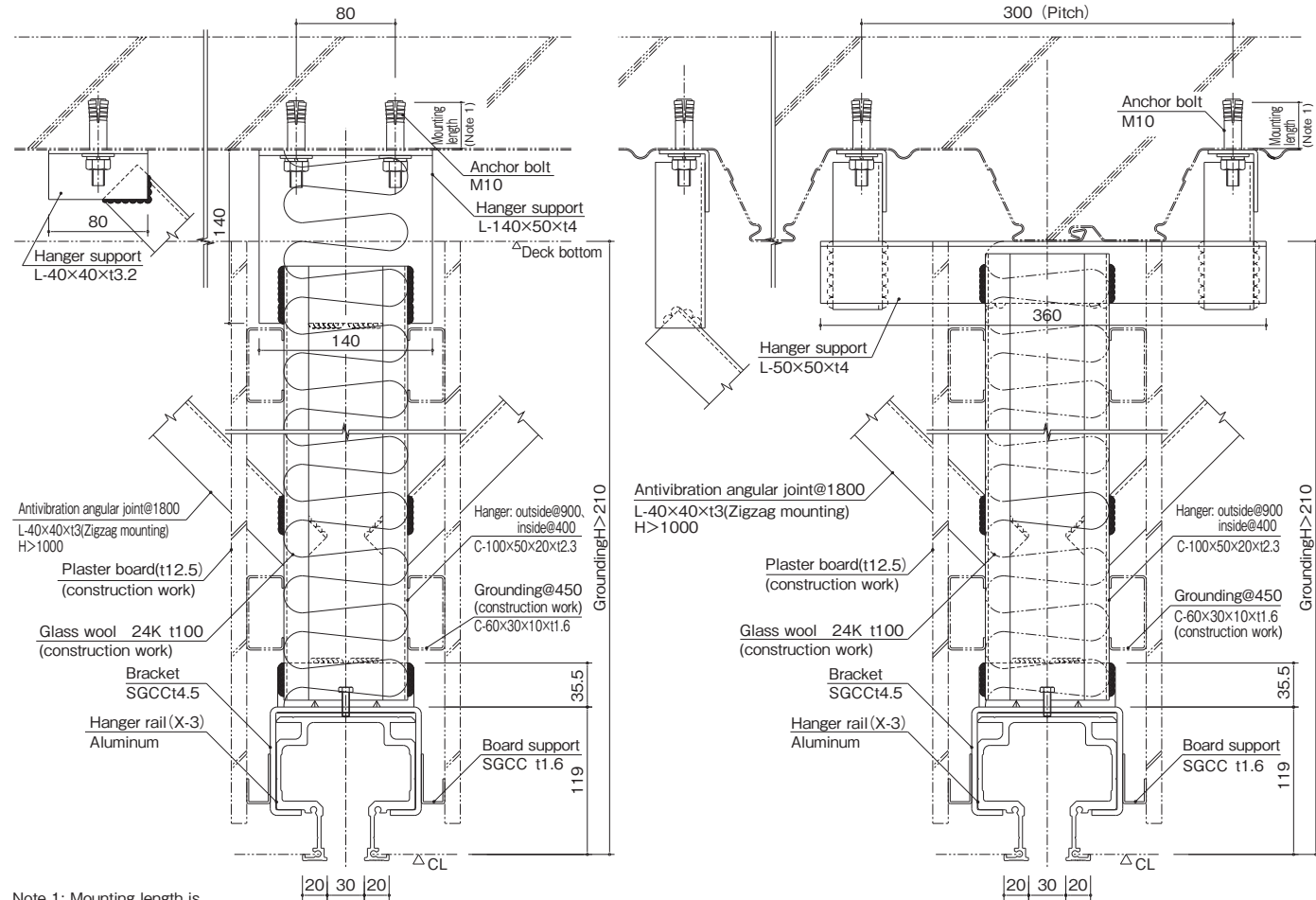


X-2/ X-3 Types Rail grounding work examples [joining]

Installation on Deck Plate Ceilings

X-3 Types

Example of in-ceiling soundproof wall backing structure

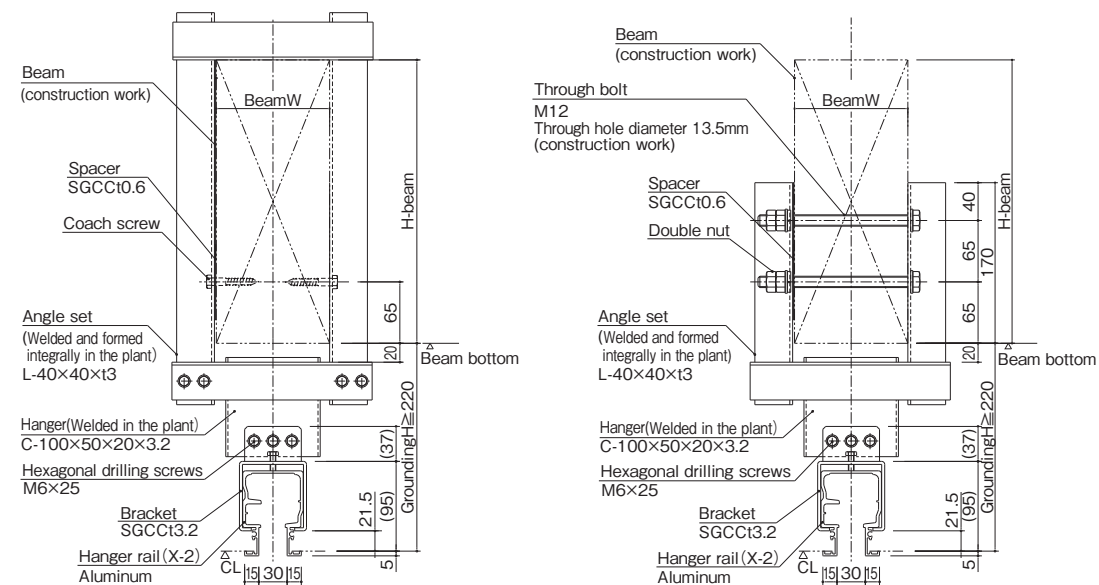


Note 1: Mounting length is determined according to weight.

Note 2: Antirust paint is JIS K 5621 for general buildings and JIS K 5674 for public buildings. SGCC is without antirust paint.

Installation on Wood Beams

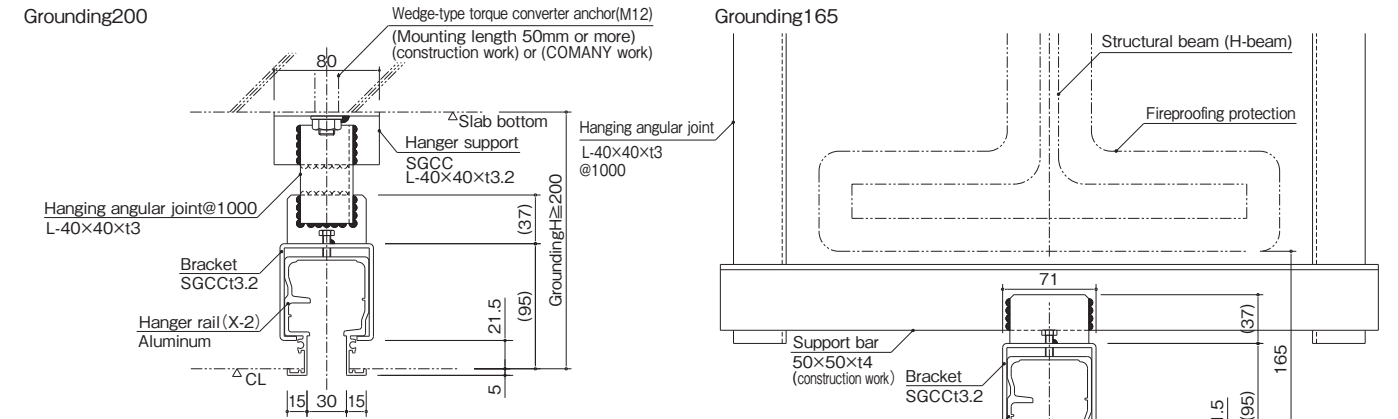
X-2 Types



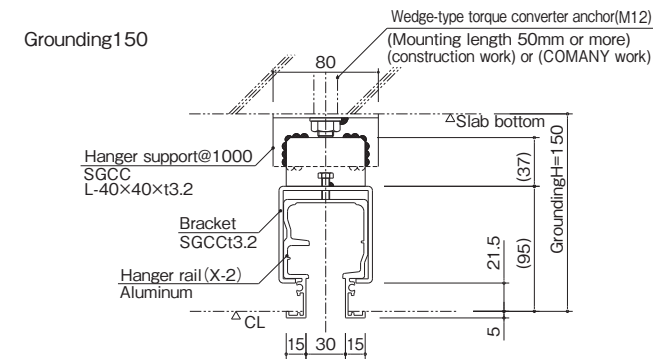
Minimum Grounding Installation

X-2 Types

Grounding200



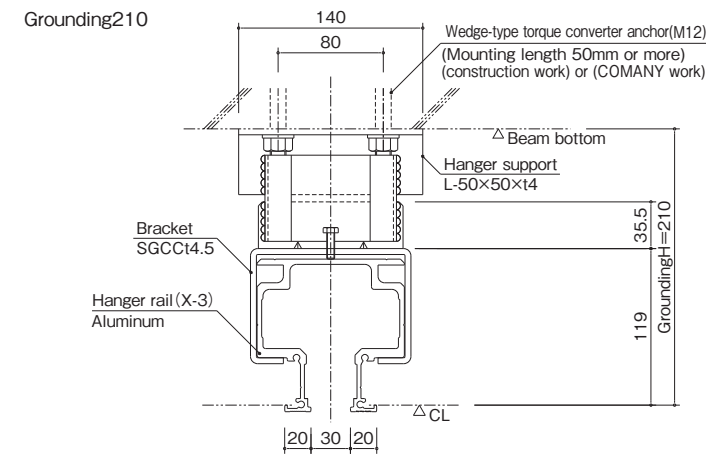
Grounding150



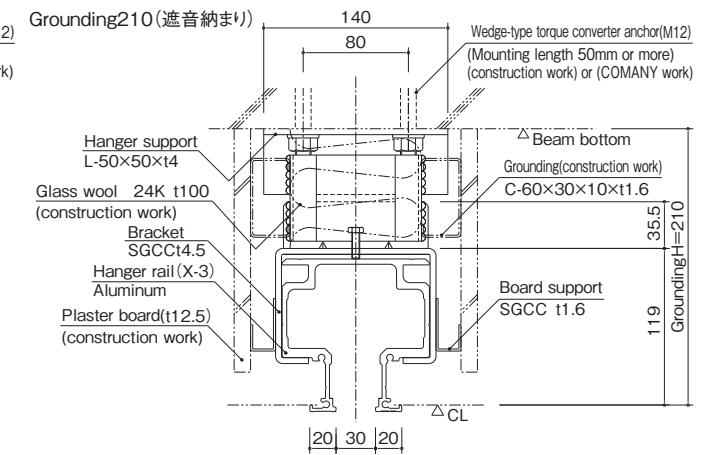
Note 1: Antirust paint is JIS K 5621 for general buildings and JIS K 5674 for public buildings. SGCC is without antirust paint.

X-3 Types

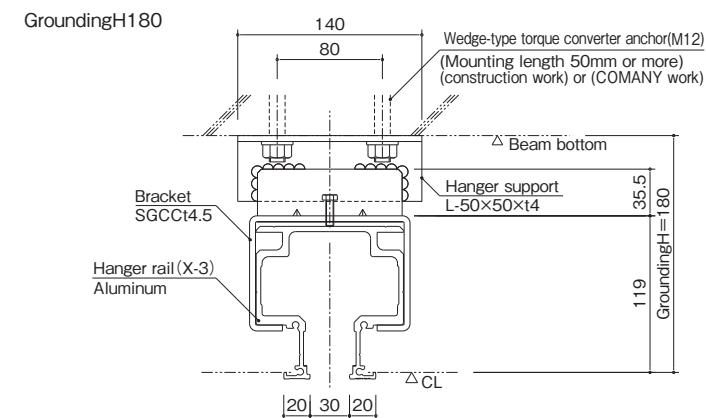
Grounding210



Grounding210(遮音納まり)



GroundingH180



Note 1: The storage unit, is @400.

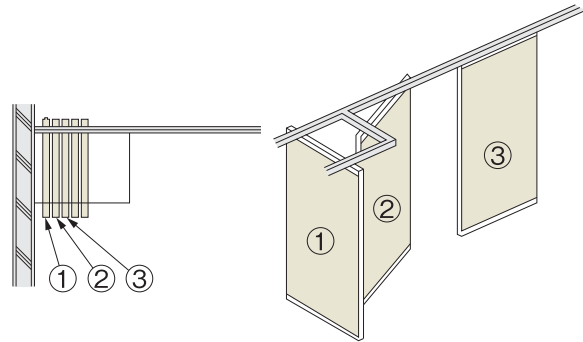
Note 2: Antirust paint is JIS K 5621 for general buildings and JIS K 5674 for public buildings. SGCC is without antirust paint.

Standard storage type

After consultation with our customers, we will apply/design the best suited storage method, based on the layout plan of the overall space.

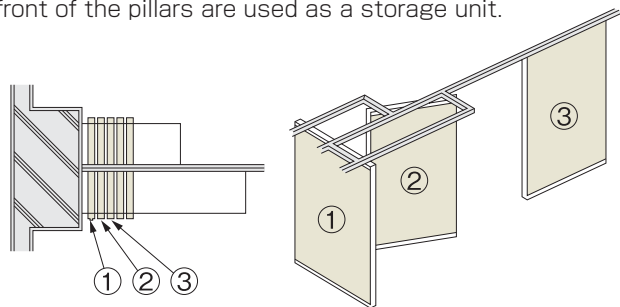
■A type

This is the simplest storage method where a part of the partitioning line, is used as a storage unit.



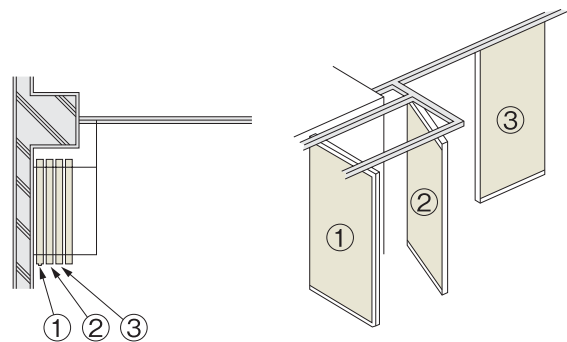
■B type

This is a method where the panels are stored on the left and right side, across the straddled partitioning line, and it is applied when the front of the pillars are used as a storage unit.



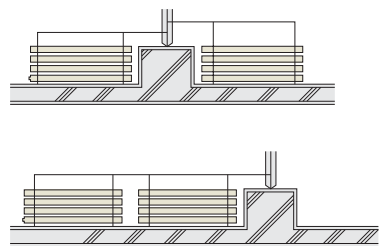
■C type

This is a method where the panels are being guided out from the partitioning line and the storage unit is separated independently. The storage unit is also can be made as a storage shed.



■C type application example

Layout can be designed based on the number of the panel and the installation conditions.



Note :The applicable storage layout, may be limited for some types, depends on the product and its runner. We kindly ask for your understanding.

List of Runners

Adopting the cross-running runner.

It is a mechanism where the runner can move freely on every directions, at the branch part. The layout of the rail is relatively unlimited, and since the runners are located on a straight-line/perpendicular directions, the ceiling side will also look elegantly finished.



Names of the Runner type :	X-3 type	X-2 type	
Allowable maximum load	300kg	150kg	
Axial bolt	M16	M16	
Rail material	Aluminum alloy	Aluminum alloy	
Our applicable products			
DP-60S			
DP-80			
DP-50		In case of steel panel with ceiling height 2700-3000	
DP-30			
DOS			

Note:In case the weight of the panel is more than 150kg per panel, the applicable runner is the X-3 type.

Standard setting Available with conditions of panel weight/dimension, and each installation type.

Information regarding Maintenance Contract

The moving wall (movable partition) series, is a product that requires periodic maintenance, to keep its steady user friendliness at all times, and to estimate on how to prevent and to measure any kind of trouble. Since we prepare the contract maintenance system to enable you to use our products for a long period of time, please make sure to make this contract with us. For detailed informations, please contact our sales staff.

The benefit of maintenance contract

- 1. Durability Securement** By conducting the maintenance checkup, we maintain the durability of the equipment.
- 2. Problem prevention** We implement preventive measures and avoid trouble that may occur when the designated room is used.
- 3. Contract cost** As the planned technical operation based on your budget is implemented, the economical maintenance is able to be performed.
- 4. Part replacement** As a preventive measure, we conduct the necessary part replacement, on a timely basis.
- 5. Emergency service and repair** In case of a malfunction, our professional technicians will prioritize and perform a repair.
- 6. Other services** Using our customer records, we provide a preliminary advice on how to maintain the product functionality.



COMANY.INC
www.comany.net

Head Office
1-93, Kougyou-Danchi Komatsu City, Ishikawa-Japan



www.sumbersetia.com

Showroom :
Jl. Tomang Raya No. 15, Jakarta-11440, Indonesia
p. (+62-21) 5601078 / 79 (Hunting)

Branch :
Jl. Ngeplak 30, Komp.Ambengan Plaza Blok B No.21
Surabaya-Indonesia
p.(+62-31) 5451133 (Hunting) p.(+62-31) 5459331