


## VINYL FLOORING

---

vinyl floor tile 

vinyl floor sheet 

Carpet Tile 

Placement Vinyl Floor Tile 

Anti-slip Vinyl Floor Sheet 

Functional Floor Material 



visit our showroom at Jl. Tomang Raya no. 15, Jakarta  
for information call (+62-21) 5601078 / 9  
or email to [info@sumbersetia.com](mailto:info@sumbersetia.com)

[www.sumbersetia.com](http://www.sumbersetia.com)



**PT SUMBER SETIA ABADI**  
BUILDING INTERIOR SOLUTIONS

[www.sumbersetia.com](http://www.sumbersetia.com)



Showroom

Jl. Tomang Raya no. 15  
Jakarta 11440, Indonesia

p. (+62-21) 5601078/9

f. (+62-21) 5601083, 5601069

Branch:

Jl. Ngemplak 30, Komp. Ambengan Plaza Blok B No. 21  
Surabaya, Indonesia

p. (+62-31) 5451133 (Hunting), (+62-31) 5459331

f. (+62-31) 5317145



# DENIM COLLECTION

VINYL FLOORING

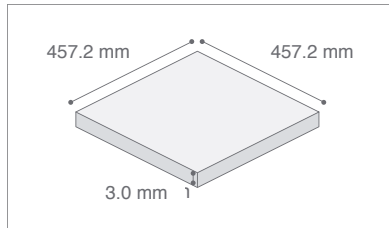
# Vinyl Tile Flooring

## DENIM FLOOR KT

- \* The world's first denim floor series collaborated with the world's leading denim supplier "Kaihara company"
- \* Develops tiles, sheets and carpets tiles with denim as design motif

### SPECIFICATIONS

Thickness : 3.00 mm  
Width & Length : 457.2 mm x 457.2 mm  
Weight per roll : 50.6 kg



DMT-401



DMT-402



DMT-403



DMT-404

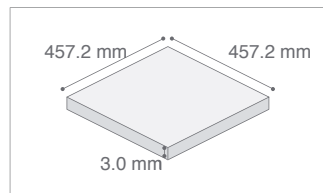


## Vinyl Flooring DENIM FLOOR

- \* The world's first denim floor series collaborated with the world's leading denim supplier "Kaihara company"
- \* Develops tiles, sheets and carpets tiles with denim as design motif

### SPECIFICATIONS

Thickness	: 5.00 mm
Width & Length	: 500.0 mm x 500.0 mm
Weight per roll	: 20.0 kg



DML-101

## DENIM FLOOR FT

### SPECIFICATIONS

Thickness	: 3.00 mm
Width & Length	: 150 x 914.4 mm (DMH-201) : 180 X 1,260 mm (DMH-301)
Weight per roll	: 16.1 kg (DMH-201), 16.2 kg (DMH-301)

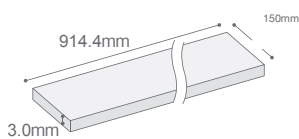


DMH-201

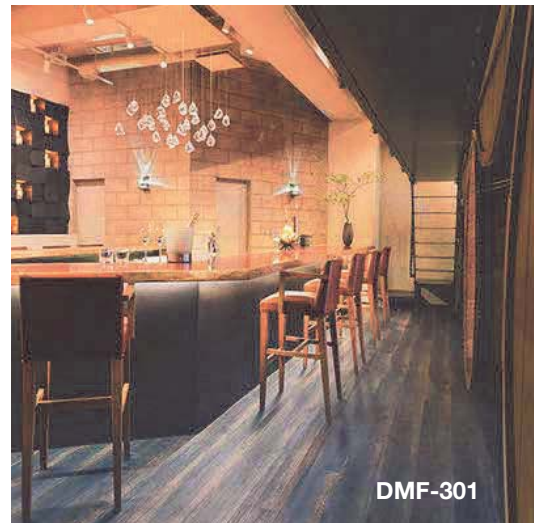
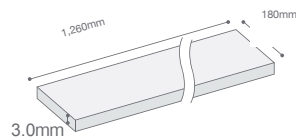


DMH-301

DMH-201



DMH-301



DMF-301



DMH-201

## Sheet Vinyl Flooring

# DENIM FLOOR FS



再生ビニル使用  
工場内リサイクル

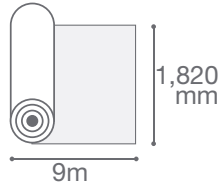
VOC対策品



- \* The world's first denim floor series collaborated with the world's leading denim supplier "Kaihara company"
- \* Develops tiles, sheets and carpets tiles with denim as design motif

### SPECIFICATIONS

Thickness : 2.00 mm  
Width & Length : 1,820 mm x 9,000 mm  
Weight per roll : 50.6 kg



DMS-601



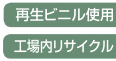
DMS-602



DMS-603

# Carpet Tile

## DENIM FLOOR CT



- \* The world's first denim floor series collaborated with the world's leading denim supplier "Kaihara company"
- \* Develops tiles, sheets and carpets tiles with denim as design motif

### MATERIAL

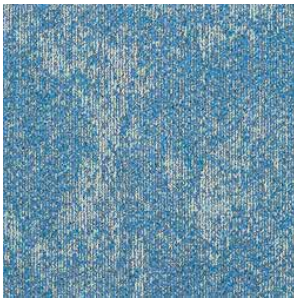
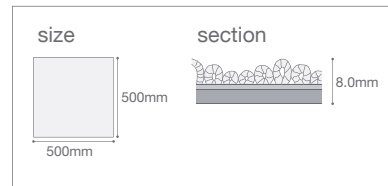
Pile : Pile/original nylon F100%, Anthrone © Rumina™ lined nylon  
Backing : Special PVC backing (lightweight backing) + glass non-woven fabric

### SPECIFICATIONS

Total thickness : 7.5mm  
Total size : 500.0mm x 500.0mm  
Pile length : High 4.5mm / M 3.5mm / L 2.5mm  
Pile density : 1/10 Gauge x 11.5 stitch  
Total weight : 19.3 kg  
Contents per carton : 16 sheets / case (=4m<sup>2</sup>)

### PROPERTY

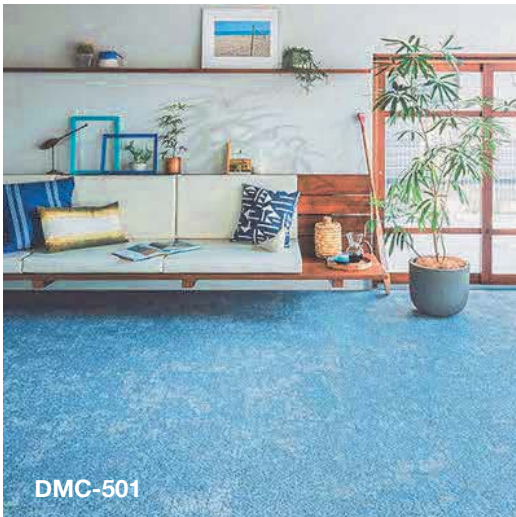
Antistatic : Built-up charge bellow 1 kV  
Color fastness : Light over class 5 or higher  
Flamemability : Flameproof performance test No. E1170216



DMC-501



DMC-502



DMC-501



# VINYL TILE





# DOLCE

\* Composition of a new design that incorporates various colours that nature captures & expresses a natural texture vinyl floor tile.

\* Surface special UV resin coating to prevent initial contamination

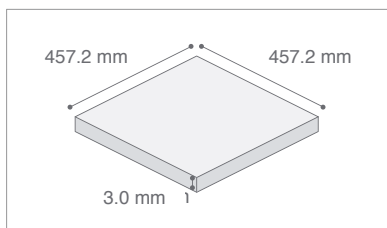
\* Use:

**Building: Commercial facilities, Amusement facilities, Office buildings, Public facilities, Schools, etc**

**Site: Aisles, Sales floors, General rooms, corridors, etc.**

## SPECIFICATIONS

Thickness & Size : 3.0 mm x 457.2 mm x 457.2 mm  
 Contents per cartoon : 15 pcs /case  
 Weight per cartoon : 20.0 Kg

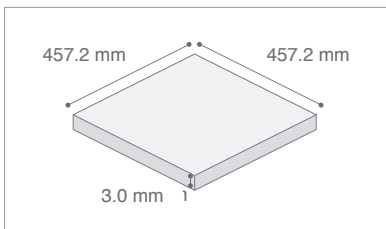


# DOLCE CHROMA

- \* Art design tile emphasizing multicolour with unique colour tone by dynamic pattern Tile
- \* Surface special UV resin coating finish for early stain prevention contamination
- \* Use:  
**Building: Commercial facilities, Amusement facilities, Restaurants, etc**  
**Site: Aisles, Sales floors, Auditorium, etc.**

### SPECIFICATIONS

Thickness & Size : 3.0 mm x 457.2 mm x 457.2 mm  
Contents per cartoon : 15 pcs /case  
Weight per cartoon : 20.0 Kg



686-601



686-602



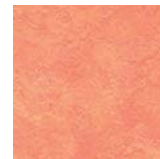
686-603



686-604



686-605



686-606



686-607



686-608



686-609



686-610



686-611



686-612

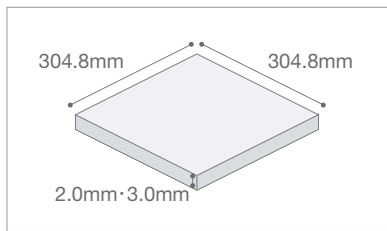
## P-TILE (Modern)

### SPECIFICATIONS

Thickness & Size	: 2.00 x 304.8 x 304.8 mm
Contents per cartoon	: 50 Pcs
Weight per cartoon	: 18.3 Kg

### TEST RESULT (JIS A 5705)

Subject	Result	Requirement
Thickness	: 1.91 mm	: 2.0 ± 0.15 mm
Size Width	: 304.80 mm	: 304.8 ± 0.30 mm
Length	: 304.82 mm	: 304.8 ± 0.30 mm
Squareness	: 0.08 mm	: ≤ 0.25 mm
Weight	: 4.0 kgs/m <sup>2</sup>	
Indentation 20° C	: 0.22 mm	: ≦ 0.15 mm
45° C	: 0.45 mm	: ≦ 0.8 mm
Residual Indentation	: 4.7%	: ≦ 8.0%
<b>Dimensional stability bathed in hot air at 80 C, 6 hrs</b>		
Width	: 0.03%	: ≦ 0.20%
Length	: 14%	: ≦ 0.20%
<b>Dimensional stability immersed in water at 20 C, 120 hrs</b>		
Width	: 0.06%	: ≦ 0.20%
Length	: 0.02%	: ≦ 0.20%
Volatile loss	: 0.08%	: ≦ 0.50%
Slipperness	: 0.75	
Abrasion	: 0.34 mm	



A-27, 74, 79, 94, 95, 97



A-6



A-17



A-25



A-27



A-29



A-35



A-60



A-72



A-73



A-74



A-78



A-79



A-82



A-83



A-85



A-88



A-89



A-90



A-91



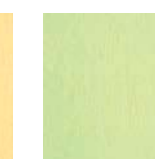
A-92



A-93



A-94



A-95



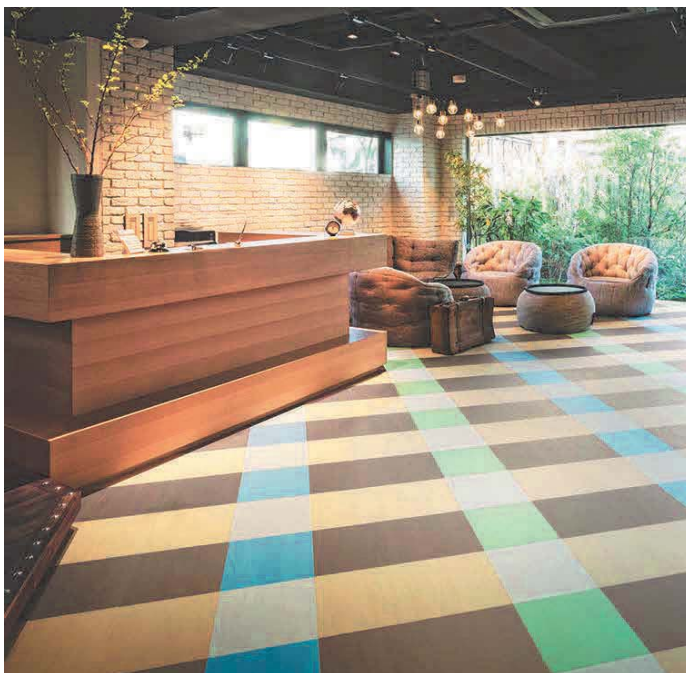
A-96



A-97



A-98



A-17, 35, 82, 96, 98

# P-TILE (Classic)



P-12. 41. 44. 60. 62. 74



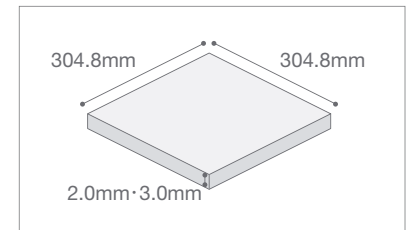
P-1 P-10 P-11 3mm



P-12 3mm P-13 P-16 3mm



P-17 P-22 P-23



P-25 P-32 3mm P-35 P-41 3mm P-44 3mm



P-60 3mm P-61 P-62 P-74 3mm



P-78 P-80 3mm P-81 3mm P-82 3mm

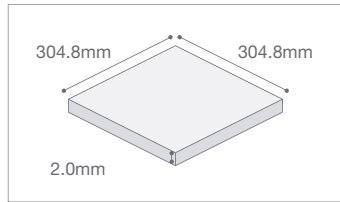


# P-TILE Muji

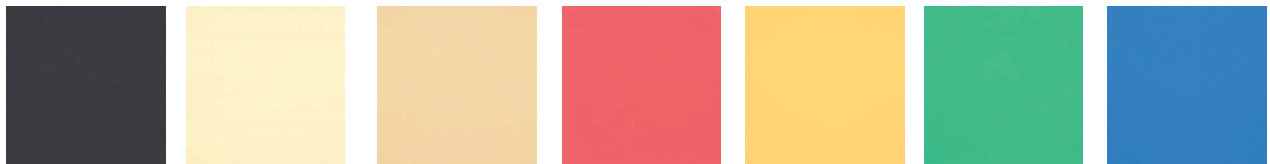
A colourful & flat design that responds to changes in times  
Appearing in a single colour or a  
pattern, It is possible to create an

**SPECIFICATIONS**

Thickness & Size : 2.00 x 304.8 x 304.8 mm  
Contents per cartoon : 50 Pcs  
Weight per cartoon : 18.9 Kg



PRD-401 PRD-402 PRD-403



PRD-404 PRD-408 PRD-409 PRD-445 PRD-409 PRD-451 PRD-454



PRD-460 PRD-461 PRD-463 PRD-466 PRD-467 新 PRD-468 PRD-469



PRD-470 新 PRD-471 新 PRD-472 新 PRD-473 新 PRD-474 新 PRD-475 新 PRD-476 新



PRD-477 新 PRD-478 PRD-479 新 PRD-480 新

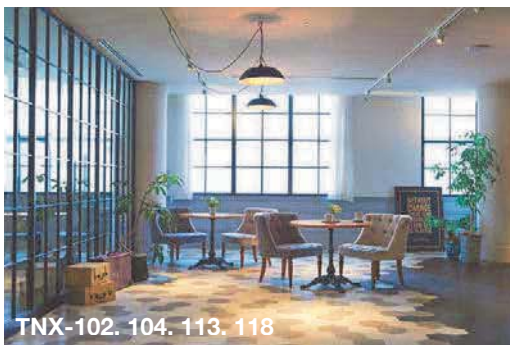


PRD-481 新 PRD-482 新 PRD-483 新 PRD-484 新

# TERAHNO

## SPECIFICATIONS

Thickness & Size : 2.00 x 130 mm (one side)  
 Contents per carton : 64 Pcs  
 Weight per carton : 17.5 Kg



TNX-102



TNX-103



TNX-104



TNX-105



TNX-106



TNX-107



TNX-109



TNX-110



TNX-111



TNX-112



TNX-113



TNX-114



TNX-115



TNX-116



TNX-117



TNX-118



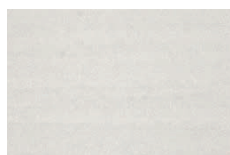
TN-102



TN-103



TN-105



TN-106



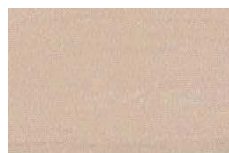
TN-107



TN-110



TN-111



TN-112



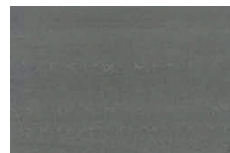
TN-114



TN-115



TN-116



TN-118



## SPECIFICATIONS

Thickness & Size  
 S size : 3.00 x 304.8 x 457.2 mm  
 Q size : 3.00 x 152.4 x 457.2 mm  
 R size : 3.00 x 304.8 x 914.4 mm  
 T size : 3.00 x 457.2 x 914.4 mm  
 Contents per carton  
 S size : 22 pcs  
 Q size : 44 pcs  
 R size : 11 pcs  
 T size : 8 pcs  
 Weight per carton : 17.5 Kg

# MATIL

## SPECIFICATIONS

### Matil Y Type

Thickness & Size : 3.00 x 150-200 x 914,4 mm  
 Contents per cartoon : 20 Pcs  
 Weight per cartoon : 16.5 Kg

### Matil C Type

Thickness & Size : 3.00 x 304.8 x 304.8 mm  
 Contents per cartoon : 32 Pcs  
 Weight per cartoon : 15.5 Kg

### Matil P Type

Thickness & Size : 3.00 x 76.2 x 304.8 mm  
 Contents per cartoon : 88 Pcs  
 Weight per cartoon : 10.7 Kg

### Matil L Type

Thickness & Size : 3.00 x 228.6 x 228.6 mm  
 Contents per cartoon : 76 Pcs  
 Weight per cartoon : 15.7 Kg

### Matil E Type

Thickness & Size : 3.00 x 457.2 x 457.2 mm  
 Contents per cartoon : 15 Pcs  
 Weight per cartoon : 17.0 Kg

### Matil U Type

Thickness & Size : 3.00 x 600 x 60 mm  
 Contents per cartoon : 10 Pcs  
 Weight per cartoon : 20.2 Kg



MBC-211



MBC-212



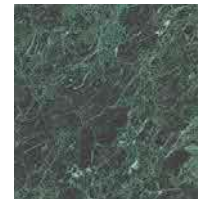
MBC-213



MBE-126



MBE-142



MBE-221



MBE-223



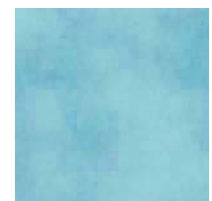
MBE-226



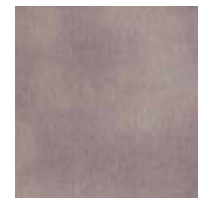
MBE-231



MBE-255



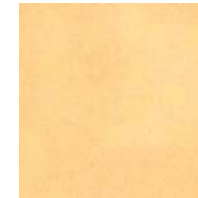
MBE-257



MBE-228



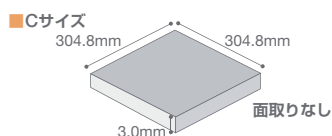
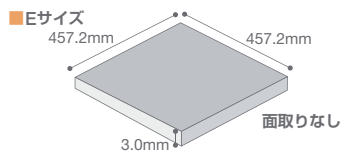
MBE-249



MBE-252



MBE-260



# MATIL



MBL-277



MBL-278



MBL-279



MBP-211



MBP-212



MBP-213



MBU-276



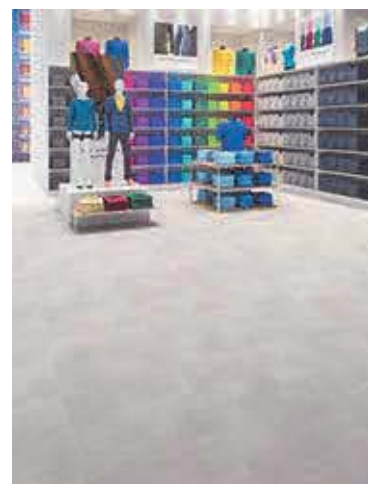
MBU-275



MBU-274



MBU-272



MBY-280



MBY-281



MBY-282



# WOODLINE

## SPECIFICATIONS

### Woodline A Type

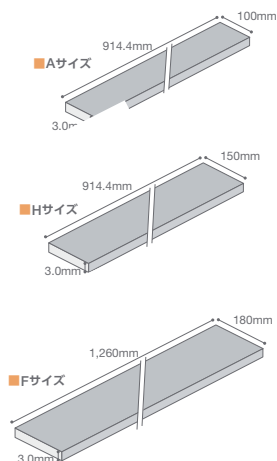
Thickness & Size : 3.00 x 100 x 914,4 mm  
 Contents per cartoon : 32 Pcs  
 Weight per cartoon : 15.7 Kg

### Woodline F Type

Thickness & Size : 3.00 x 180 x 1,260 mm  
 Contents per cartoon : 13 Pcs  
 Weight per cartoon : 15.6 Kg

### Woodline H Type

Thickness & Size : 3.00 x 150 x 914,4 mm  
 Contents per cartoon : 22 Pcs  
 Weight per cartoon : 16.1 Kg



### 表面クリア4面取り

表面クリア層のみ面取りした仕上げです。タイルの断面が見えず無垢材に近い自然の風合いを表現しました。

■ A・Hサイズ 一部の品番をのぞく

表面クリア4面取り

印刷フィルム層 0.4mm  
 表面クリア層 3.0mm  
 バックイング

**※注** DXタイプ(表面クリア層0.6mm)  
 受注生産品・納期3週間/65ケース以上  
 価格は387ページをご参照ください。  
 商品番号はAサイズの場合WBA-□□□DXになります。  
 ※DXタイプはエコマーク商品ではありません。



WBA - 301

WBA - 302



WBA - 306

WBA - 307

WBA - 308

WBA - 309

WBA - 312

WBA - 313



WBA - 314

WBA - 315

WBA - 316

WBA - 322

WBA - 323

WBA - 324



WBA - 325

WBA - 326

WBA - 327

WBA - 328

WBA - 330

WBA - 331



WBA - 332

WBA - 333

WBA - 342

WBA - 343

WBA - 344

WBA - 345



WBA - 346

WBA - 347

WBA - 412

WBA - 413

WBA - 414

WBA - 601

# WOODLINE

WBF - 3.00 X 180 X 1260 mm



WBF - 392



WBF - 393



WBF - 394



WBF - 395



WBF - 396



WBF - 397



WBF - 398



WBF - 399



WBF - 452



WBF - 400



WBF - 401



WBF - 402



WBF - 403



WBF - 404



WBF - 405



WBF - 460



WBF - 445



WBF - 446



WBF - 447



WBF - 448



WBF - 449



WBF - 452



WBF - 455



WBF - 456



WBF - 457



WBF - 458



WBF - 459



WBF - 460



# WOODLINE

WBH - 3.00 X 150 X 914.4 mm



WBH - 406



WBH - 407



WBH - 415



WBH - 416



WBH - 417



WBH - 418



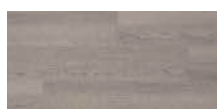
WBH - 419



WBH - 420



WBH - 421



WBH - 422



WBH - 423



WBH - 424



WBH - 425



WBH - 426



WBH - 427



WBH - 428



WBH - 429



WBH - 430



WBH - 431



WBH - 432



WBH - 433



WBH - 434



WBH - 435



WBH - 436



WBH - 437



WBH - 438



WBH - 439



WBH - 440



WBH - 441



WBH - 442



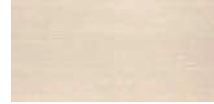
WBH - 443



WBH - 444

# WOODLINE

WBH - 3.00 X 150 X 914.4 mm



WBH - 350



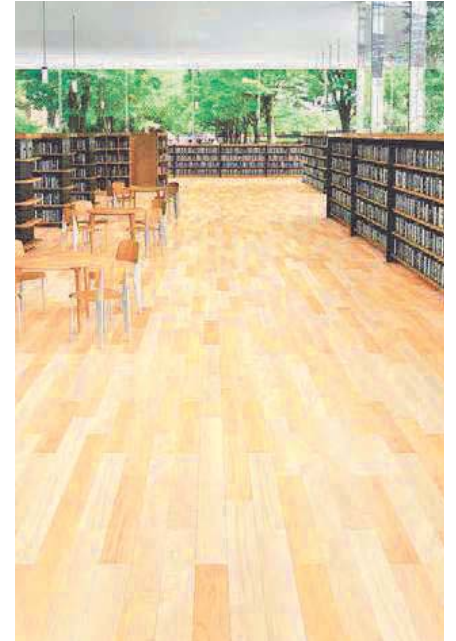
WBH - 351



WBH - 352



WBH - 364



WBH - 367



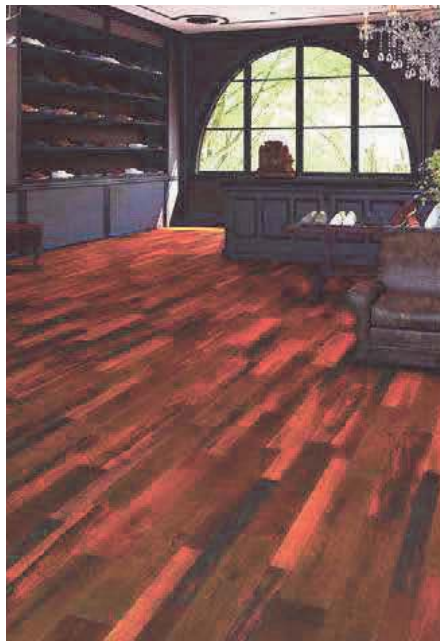
WBH - 368



WBH - 369



WBH - 371



WBH - 372



WBH - 373



WBH - 374



WBH - 375



WBH - 376



WBH - 377



WBH - 379



WBH - 380



WBH - 381



WBH - 382



WBH - 383



WBH - 384



WBH - 385



WBH - 386



WBH - 388



WBH - 389



WBH - 390

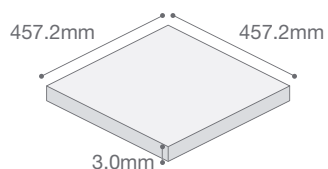


WBH - 391

# MORTALIKE

## SPECIFICATION

Thickness 2.5 mm / EN 428  
Weight 19,6 kg  
Size 457,2 x 457,2 mm  
Contents per cartoon 15 pcs



647-701



647-702



647-703



647-704



647-705



647-706





# VINYL SHEET FLOORING

# AC FLOOR 28/35/60

A soft foam layer to soften the shock at the time of falling, a bottom floor, a vinyl floor sheet, which is hard to get fatigue due to dew condensation.

### SPECIFICATIONS

Thickness : 2.8 mm, 3.5 mm, 6.0 mm  
 Width & Length : 1,820 mm x 9,000 mm  
 Weight per roll : 47.7 kg, 53.0 kg, 72 kg

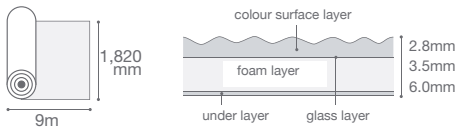
### TEST RESULT (JIS A 5705)

Subject	Result		Requirement
	MARBLE	SOLID	
Colour no.	: 2201-2299	: 2001-2006	
Thickness	: 2.81 mm	: 2.81 mm	: 2.8 mm (-10~ +20%)
Size Width	: 1,827 mm	: 1,827 mm	: ≧ 1,820 mm
Length	: 9,100 mm	: 9,100 mm	: ≧ 9,000 mm
Weight	: 2.91 kg/m <sup>2</sup>	: 2.80 kg/m <sup>2</sup>	
Indentation 20° C	: 0.96 mm		: ≧ 0.3 mm

Residual Indentation : 8.58% 3% : ≧ 15%

### Dimensional stability bathed in hot air at 80 C, 6 hrs

Width	: 0.1%	: 0.06%	: ≧ 2.0%
Length	: 0.03%	: 0.06%	: ≧ 2.0%
Volatile loss	: 0.24%	: 0.22%	: ≧ 0.50%
Slipperness	: 0.79	: 0.68	
Abrasion	: 0.09 mm	: 0.07	(JIS A 1451)



## Classic Marble Type



AC-2201 28/35\*/60\*



AC-2214 28/35\*/60\*



AC-2222 28/35\*/60\*



AC-2282 28/35\*/60\*



AC-2283 28/35\*/60\*



AC-2291 28/35\*/60\*



AC-2295 28/35\*/60\*



AC-2296 28/35\*/60\*



AC-2299 28/35\*/60\*

## Color Type



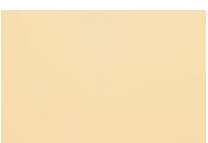
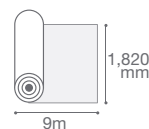
AC-2001



AC-2002



AC-2003



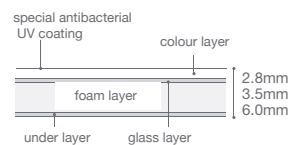
AC-2004



AC-2005



AC-2006



# AC FLOOR 28/35/60

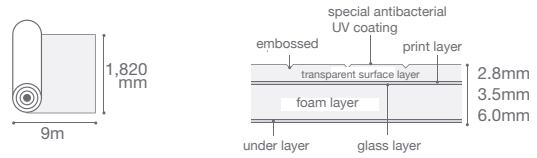
Multifunctional seat with shock absorption by foam layer & soft walking feeling.  
The colour pattern was renewed considerably.

### SPECIFICATIONS

Thickness	: 2.8 mm, 3.5 mm, 6.0 mm
Width & Length	: 1,820 mm x 9,000 mm
Weight per roll	: 48.8 kg, 53.9 kg, 70.4 kg

### TEST RESULT (JIS A 5705)

Subject	Result	Requirement
	WOOD	
Colour no.	: 3005-3087	
Thickness	: 2.82 mm	: $\sim 10\% \pm \sim 20\%$
Size Width	: 1,824 mm	: $\cong 1,820$ mm
Length	: 9,060 mm	: $\cong 9,000$ mm
Weight	: 3.12 kg/m <sup>2</sup>	
Indentation 20° C	: 1.17 mm	: $\cong 0.3$ mm
Residual Indentation	: 3.08%	: $\cong 15\%$
<b>Dimensional stability bathed in hot air at 80 C, 6 hrs</b>		
Width	: 0.03%	: $\cong 2.0\%$
Length	: 0.04%	: $\cong 2.0\%$
Volatile loss	: 0.20%	: $\cong 0.50\%$
Slipperiness	: 0.60	
Abrasion	: 0.08 mm	(JIS A 1451)



### Wood Grain Type



AC-3005



AC-3007



AC-3019



AC-3020



AC-3025



AC-3026



AC-3036



AC-3037



AC-3040



AC-3043



AC-3075



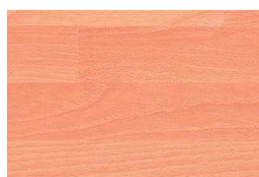
AC-3076



AC-3080



AC-3081



AC-3086



AC-3087



# AC FLOOR 28/35/60

\* Multifunctional seat with shock absorption by foam layer & soft walking feeling.

\* The colour pattern was renewed considerably.

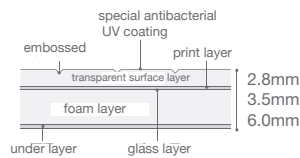
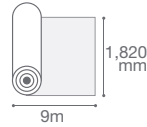
\* Use:

**Building:** Medical/ Welfare/ Nursing care facilities,  
Educational

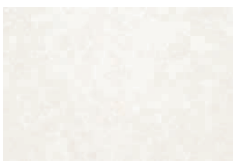
**Site:** Room, Corridor, Classroom, Toilet, etc.

## SPECIFICATIONS

Thickness : 2.8 mm, 3.5 mm, 6.0 mm  
Width & Length : 1,820 mm x 9,000 mm  
Weight per roll : 48.8 kg, 53.9 kg, 70.4 kg



## Linoleum Type



AC-3200



AC-3201



AC-3202



AC-3203



AC-3204



AC-3211



AC-3212



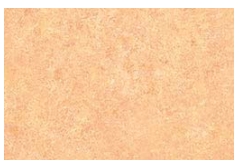
AC-3213



AC-3214



AC-3215



AC-3216



AC-3217



AC-3218



AC-3222



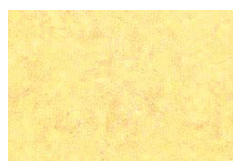
AC-3223



AC-3226



AC-3227



AC-3228



AC-3229



AC-3231



AC-3232



AC-3233



AC-3234



AC-3238



AC-3239

# PERMALEUM

- \* With a restless marble pattern & bright colour effect, the unevenness of the base & dirt on the floor surface are not noticeable.
- \* It is rich elasticity & flexibility also the feeling of walk is soft.
- \* Dirt easily falls, maintenance of everyday life is easy.
- \* Use:

**Building:** Welfare facilities, hospitals, schools, public facilities, office buildings, etc

**Site:** Room, general hospital room, hallway, classroom, stairs, office room, toilet, etc

## SPECIFICATIONS

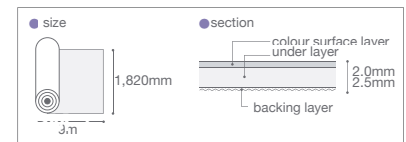
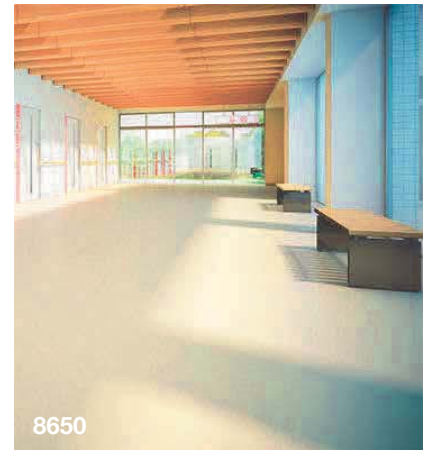
Thickness	: 2.00 mm, 2.5 mm
Width & Length	: 1,820 mm x 9,000 mm
Weight per roll	: 49.9 kg

## TEST RESULT (JIS A 5705)

Subject	Result	Requirement
Thickness	: 1.93 mm	: ± 0.2mm/ ± 0.25 mm
Size Width	: 1.827 mm	: ≧ 1,820 mm
Length	: 9,120 mm	: ≧ 9,000 mm
Weight	: 2.9 kg/m <sup>2</sup>	
Indentation 20° C	: 0.75 mm	: ≧ 0.3 mm
45° C	: 1.05 mm	: ≦ 1.5 mm
Residual Indentation	: 8.5%	: ≦ 25%

## Dimensional stability bathed in hot air at 80 C, 6 hrs

Width	: 0.27%	: ≦ 2.0%
Length	: 0.84%	: ≦ 2.0%
Volatile loss	: 0.24%	: ≦ 0.50%
Slipperness	: 0.81	
Abrasion	: 0.06 mm	(JIS A 1451)



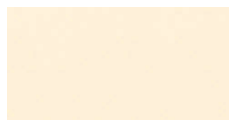
## Plane type



8020



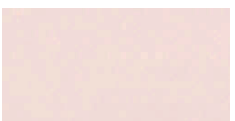
8030



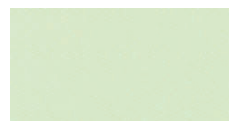
8160



8170



8180



8190



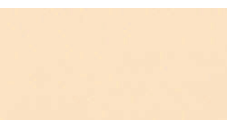
8200



8210



8240



8280



8290



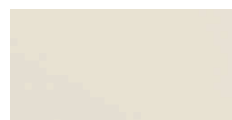
8300



8320



8330



8450



8490



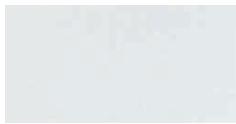
8650



8930

# PERMALEUM

## Neutral type



4060



4070



4080



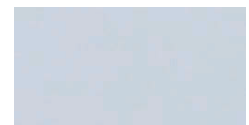
4220



4230



8520



8570

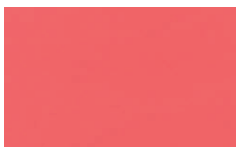
## Vivid type



4130



4160



4240



4250



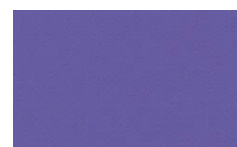
4260



4270



4280



4290



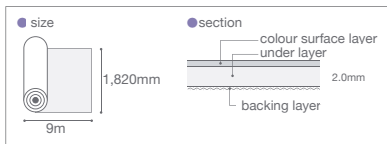
4300

# HIHAKU

- \* Produce a space with luxurious feeling with a calm colour composition of low gloss
- \* Direct production of high-quality space with scratchy pattern
- \* Maintaining aesthetic appearance by special UV coating
- \* Comfortable colour: textile pattern, high quality design due to low gloss
- \* Antibacterial is preventing bacterial growth
- \* Use:  
 Building: Hospitals, schools, public facilities, commercial facilities, etc  
 Site: Lobby, corridor, stairs, sales floor, aisle, toilet, etc.

## SPECIFICATIONS

Thickness : 2.00 mm  
 Width & Length : 1,820 mm x 9,000 mm  
 Weight per roll : 53.8 kg



HK-4066M



HK-4236M



HK-8166M



HK-8176M



HK-8326M

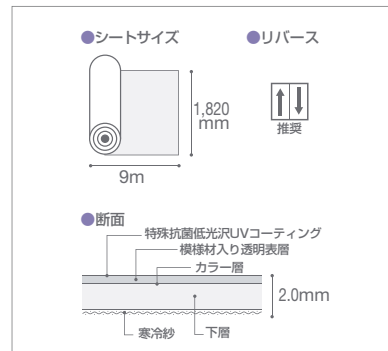


HK-8336M



HK-8176M,8336M

## シートサイズ・リバース・断面



# PERMALEUM FILARRE

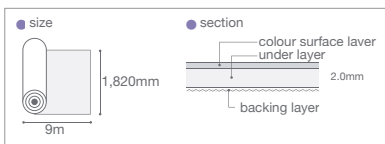
- \* **Reborn with more sophisticated textile pattern**
- \* **cost-effective**
- \* **Antibacterial properties by no wax maintenance**
- \* **Do not distinguish the unpleasant finished feeling/ dirt on the floor surface due to the unevenness of the base, making a refreshing image with a bright colour effect.**
- \* **Excellent abrasion resistance is demonstrated**
- \* **Rich in elasticity & flexibility**
- \* **The feeling of walking is soft**
- \* **Use:**

**Building:** Welfare facilities, hospitals, schools, public facilities, office buildings, etc

**Site:** Room, general hospital room, hallway, classroom, stairs, office room, toilet, etc

## SPECIFICATIONS

Thickness : 2.00 mm  
 Width & Length : 1,820 mm x 9,000 mm  
 Weight per roll : 53.8 kg



PF-4068



PF-4078



PF-4228



PF-4338



PF-4348



PF-4368



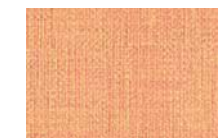
PF-4388



PF-4398



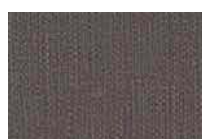
PF-5068



PF-5338



PF-8168



PF-8178



PF-8328



PF-8338



PF-8528



PF-8578

# PERMALEUM MARBLE

- \* With a restless marble pattern & bright colour effect, the unevenness of the base & dirt on the floor surface are not noticeable.
- \* It is rich elasticity & flexibility also the feeling of walk is soft.
- \* Dirt easily falls, maintenance of everyday life is easy.
- \* Use:  
**Building:** Welfare facilities, hospitals, schools, public facilities, office buildings, etc  
**Site:** Room, general hospital room, hallway, classroom, stairs, office room, toilet, etc

## SPECIFICATIONS

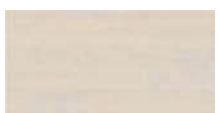
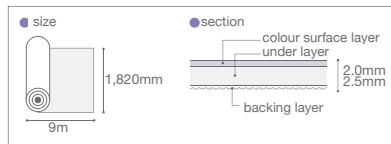
Thickness	: 2.00 mm
Width & Length	: 1,820 mm x 9,000 mm
Weight per roll	: 49.9 kg

## TEST RESULT (JIS A 5705)

Subject	Result	Requirement
Thickness	: 2.0 mm	: 2.0 ± 0.20 mm
Size Width	: 1.88 mm	: ≧ 1,820 mm
Length	: 9,100 mm	: ≧ 9,000 mm
Weight	: 2.9 kg/m <sup>2</sup>	
Indentation 20° C	: 0.65 mm	: ≧ 0.3 mm
45° C	: 0.90 mm	: ≦ 1.5 mm
Residual Indentation	: 8.5%	: ≦ 25%

## Dimensional stability bathed in hot air at 80 C, 6 hrs

Width	: 0.09%	: ≦ 2.0%
Length	: 0.82%	: ≦ 2.0%
Volatile loss	: 0.23%	: ≦ 0.50%
Slipperness	: 0.81	
Abrasion	: 0.06 mm	(JIS A 1451)



# PERMALEUM STREET

- \* It produces comfortable walking feeling with woodgrain pattern & suffice embossing.
- \* It is rich elasticity & flexibility also the feeling of walk is soft.
- \* Dirt easily falls, maintenance of everyday life is easy.
- \* Use:

**Building:** Welfare facilities, hospitals, schools, commercial facilities, etc

**Site:** Corridor, lobby, sales floor, aisle, etc.

## SPECIFICATIONS

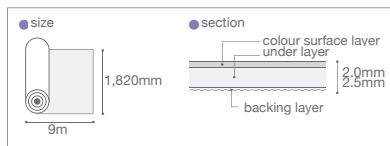
Thickness	: 2.00 mm
Width & Length	: 1,820 mm x 9,000 mm
Weight per roll	: 49.9 kg

## TEST RESULT (JIS A 5705)

Subject	Result	Requirement
Thickness	: 1.93 mm	: $2.0 \pm 0.25$ mm
Size Width	: 1.827 mm	: $\geq 1,820$ mm
Length	: 9,120 mm	: $\geq 9,000$ mm
Weight	: 2.9 kg/m <sup>2</sup>	
Indentation 20° C	: 0.75 mm	: $\geq 0.3$ mm
45° C	: 1.05 mm	: $\leq 1.5$ mm
Residual Indentation	: 7.5%	: $\leq 25\%$

## Dimensional stability bathed in hot air at 80 C, 6 hrs

Width	: 0.27%	: $\leq 2.0\%$
Length	: 0.84%	: $\leq 2.0\%$
Volatile loss	: 0.24%	: $\leq 0.50\%$
Slipperiness	: 0.89	
Abrasion	: 0.06 mm	(JIS A 1451)



PT-113M



PT-102M



PT-103M



PT-105M



PT-106M



PT-107M



PT-108M



PT-110M



PT-111M



PT-113M

# TOUGH ZONE

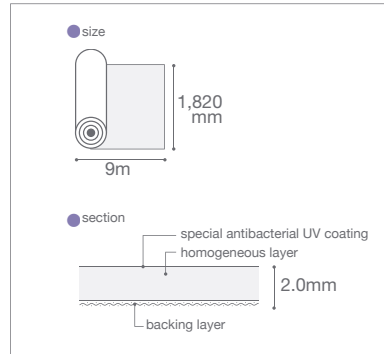
**VOC (volatility organic compound) free**  
**Aesthetic sustainability, dynamic load resistance.**  
**Vinyl floor sheet with antibacterialization realized**  
**Suitable for Hospital, school, office, etc**

### SPECIFICATIONS

Thickness : 2.00 mm  
 Width & Length : 1,820 mm x 9 m  
 Weight per roll : 49.8 kg

### TEST RESULT (JIS A 5705)

Subject	Result	Requirement
Thickness	: 1.95 mm	: 2.0 ± 0.20 mm
Size Width	: 1,835 mm	: ≧ 1,820 mm
Length	: 9,070 mm	: ≧ 9,000 mm
Weight	: 3.24 kg/m <sup>2</sup>	
Indentation 20° C	: 0.49 mm	: ≧ 0.3 mm
45° C	: 0.80 mm	: ≧ 1.5 mm
Residual Indentation	: 3.3%	: ≧ 25%
<b>Dimensional stability bathed in hot air at 80 C, 6 hrs</b>		
Width	: 0.04%	: ≧ 2.0%
Length	: 0.55%	: ≧ 2.0%
Volatile loss	: 0.14%	: ≧ 0.50%
Slipperness	: 0.76	
Abrasion	: 0.09 mm	(JIS A 1451)



TF-301M



TF-302M



TF-303M



TF-304M



TF-305M



TF-306M



TF-307M



TF-308M



TF-309M



TF-310M



TF-311M



TF-312M



TF-313M



TF-314M



TF-315M



TF-316M



TF-317M



TF-318M



TF-305M

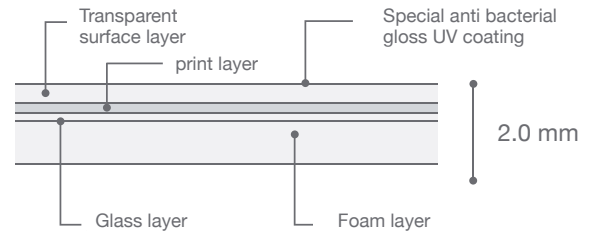


# MEDIWEL

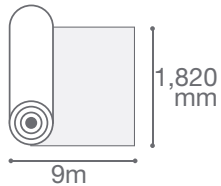
Impact absorption by foam layer.  
Compatible with no-wax maintenance by special UV coating

**SPECIFICATIONS**

Thickness & Size : 2.00 x 1,820 x 9000 mm  
Weight per carton : 46.3 Kg



ME - 4040



ME - 4018



ME - 5005



ME - 4006



ME - 4007



ME - 4018



ME - 4019



ME - 4020



ME - 4025



ME - 4026



ME - 4036



ME - 4037



ME - 4040



ME - 4041



ME - 4043



ME - 4075



ME - 4076

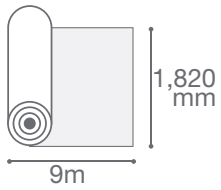
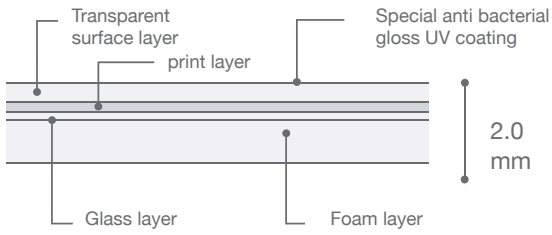


ME - 4086



ME - 4087

# MEDIWEL



ME - 4200



ME- 4215, 4226, 4227, 4231



ME - 4201



ME - 4202



ME - 4203



ME - 4204



ME - 4211



ME - 4212



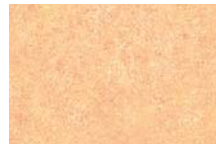
ME - 4213



ME - 4214



ME - 4215



ME - 4216



ME - 4217



ME - 4218



ME - 4222



ME - 4223



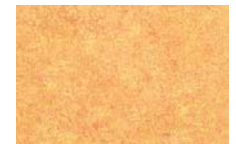
ME - 4226



ME - 4227



ME - 4228



ME - 4229



ME - 4231



ME - 4232



ME - 4233



ME - 4234



ME - 4238



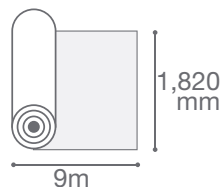
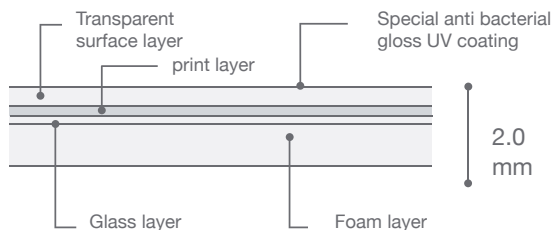
ME - 4239

# MAJESTA

High design multi seat with wood, stone, abstract pattern  
and various colour composition  
Revamped the colour pattern greatly

### SPECIFICATIONS

Thickness & Size : 2.00 x 1,820 x 9000 mm  
Weight per carton : 46.3 Kg



abstract pattern  
only

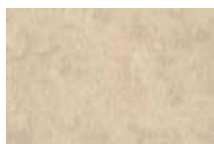
### Abstract Type



MJ-1157



MJ-1158



MJ-1159



MJ-1160



MJ-1161



MJ-1162



MJ-1171



MJ-1172



MJ-1173

### Grain Type



MJ-1107



MJ-1010



MJ-1011



MJ-1019



MJ-1023



MJ-1050



MJ-1051



MJ-1067



MJ-1070

## Stone Pattern



MJ-1101



MJ-1105



MJ-1106



MJ-1107



MJ-1108



MJ-1111



MJ-1120



MJ-1121



MJ-1125



MJ-1126



MJ-1130



MJ-1139



MJ-1140



MJ-1002



MJ-1010



MJ-1010

# CARPET TILE



# TAPIS PLAYNUE II

## MATERIAL

Pile : 100% Polypropylene Filament, Loop  
 Backing :  
 Primary backing : Non woven polyester  
 Secondary backing : Reinforced PVC

## SPECIFICATIONS

Total thickness : 6mm  
 Total size : 500.0 mm x 500.0 mm  
 Pile height : 3.0 mm  
 Pile density : Gauge 1/10 stitch rate 12/inch  
 Total weight : 16.7 kg  
 Contents per carton : 16 pcs

## PROPERTY

Antistatic : Built-up charge bellow 1 kV (23°C, 25% RH Synthetic shoe bed/ JIS L 4406)  
 Color fastness : Light over class 5 (JIS L 4406)  
 Rubbing over class 4 (JIS 4406)  
 Flamemability : Flameproof performance test No. ET900005



## Plane Type



481-222

481-223

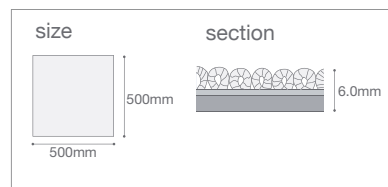


481-224

481-225

481-227

481-235



481-242

481-246

481-254

481-256

481-258

481-260

481-262

481-264



481-269

481-271

481-272

481-273

481-274

481-275

481-276

481-277



481-278

481-279

481-280

481-281

481-282

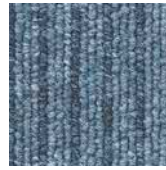
481-283

481-284

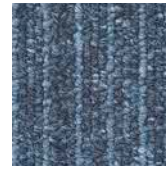
481-285

# TAPIS PLAYNUE II

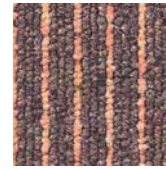
## Pin Stripe Type



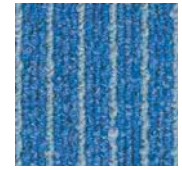
481-801



481-802



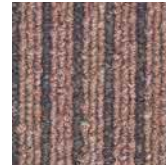
481-806



481-813



481-814



481-815



481-816



481-817

## Random Stripe Type



481-841



481-842



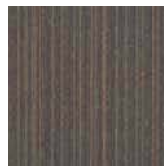
481-843



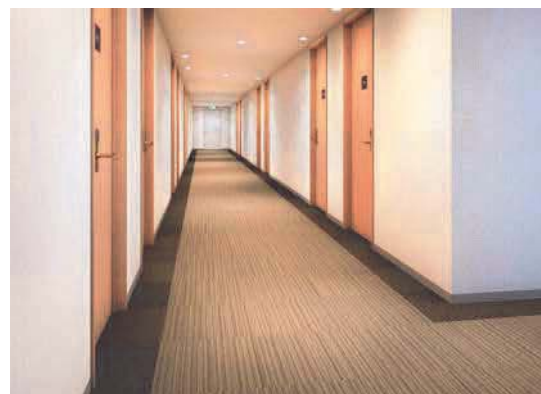
481-844



481-845



481-846



## Multi Stripe Type



481-851



481-852



481-853



481-854



481-855



481-856

## Block Stripe Type



481-891

# TAPIS TRESSA

## MATERIAL

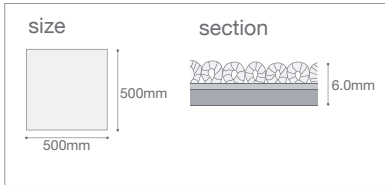
Pile : 100% Polypropylene Filament, Loop  
 Backing :  
 Primary backing : Non woven polyester  
 Secondary backing : Reinforced PVC

## SPECIFICATIONS

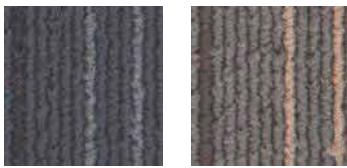
Total thickness : 6mm  
 Total size : 500.0 mm x 500.0 mm  
 Pile height : 3.0 mm  
 Pile density : Gauge 1/10 stitch rate 12/inch  
 Total weight : 16.7 kg  
 Contents per carton : 16 pcs

## PROPERTY

Antistatic : Built-up charge bellow 1 kV (23°C, 25% RH Synthetic shoe bed/ JIS L 4406)  
 Color fastness : Light over class 5 (JIS L 4406)  
 Rubbing over class 4 (JIS 4406)  
 Flamemability : Flameproof performance test No. ET900005



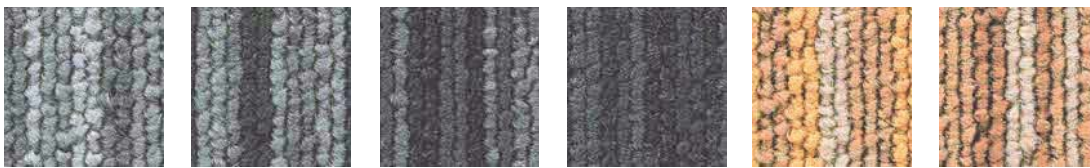
## Gradation Type



483-3621

483-3622

## Tressa Type



483-3601

483-3602

483-3603

483-3604

483-3605

483-3606



483-3607

483-3608

483-3609

483-3610

483-3611

483-3612



# TAPIS FORCIS II

## MATERIAL

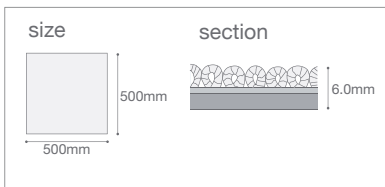
Pile : 100% Polypropylene Filament, Loop  
 Backing :  
 Primary backing : Non woven polyester  
 Secondary backing : Reinforced PVC

## SPECIFICATIONS

Total thickness : 6mm  
 Total size : 500.0 mm x 500.0 mm  
 Pile height : 3.0 mm  
 Pile density : Gauge 1/10 stitch rate 12/inch  
 Total weight : 16.7 kg  
 Contents per carton : 16 pcs

## PROPERTY

Antistatic : Built-up charge bellow 1 kV (23°C, 25% RH Synthetic shoe bed/ JIS L 4406)  
 Color fastness : Light over class 5 (JIS L 4406)  
 Rubbing over class 4 (JIS 4406)  
 Flamemability : Flameproof performance test No. ET900005



476-5101



476-5102



476-5103



476-5104



476-5105



476-5106



476-5107

# LA 500

A sophisticated space where interior shades interweave

## MATERIAL

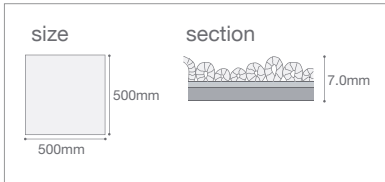
Pile : Pile/dyed nylon F100%, anthrone © Rumina™ dyed nylon  
 Backing : Special PVC + glass non-woven fabric (weight-backing)

## SPECIFICATIONS

Total thickness : 7.0mm  
 Total size : 500.0 mm x 500.0 mm  
 Pile length : H 4.0mm / M3.0mm / L2.5mm  
 Pile density : 1/10 Gauge x 11 stitch  
 Total weight : 17.4 kg  
 Contents per carton : 16 pcs / case (=4 m<sup>2</sup>)

## PROPERTY

Antistatic : Built-up charge bellow 1 kV (23°C, 25% RH Synthetic shoe bed/ JIS L 4406)  
 Color fastness : Light over class 5 (JIS L 4406)  
 Flamemability : Flameproof performance test No. E1160213



456-1704



456-1706



456-1708



456-1709 新



456-1710 新



456-1711 新



456-1712 新



456-1713 新

# LA 1000

Designing the space with freely manipulate

## MATERIAL

Pile : Pile/dyed nylon F100%, anthrone © Rumina™ dyed nylon  
 Backing : Special PVC + glass non-woven fabric (weight-backing)

## SPECIFICATIONS

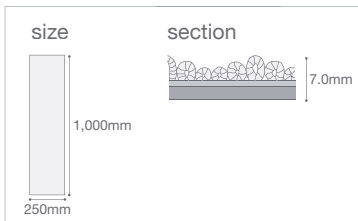
Total thickness : 7.0mm  
 Total size : 250.0 mm x 1000.0 mm  
 Pile length : H 4.0mm / M3.0mm / L2.5mm  
 Pile density : 1/10 Gauge x 11 stitch  
 Total weight : 13.2 kg  
 Contents per carton : 12 pcs / case (=3 m<sup>2</sup>)

## PROPERTY

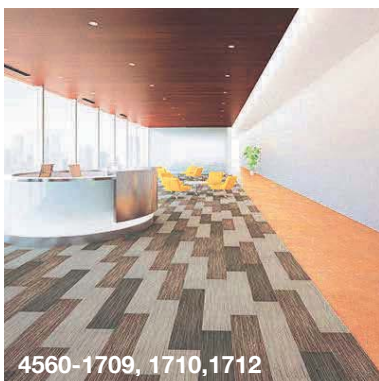
Antistatic : Built-up charge bellow 1 kV (23°C, 25% RH Synthetic shoe bed/ JIS L 4406)  
 Color fastness : Light over class 5 (JIS L 4406)  
 Flamemability : Flameproof performance test No. E1160214



4560-1706, 1709,1712



4560-1704    4560-1706    4560-1708    4560-1709    4560-1710    4560-1711    4560-1712    4560-1713



4560-1709, 1710,1712



4560-1708, 1709,1713

# MF 500

An admiration for the universal beauty of marble

## MATERIAL

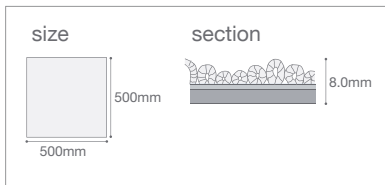
Pile : Pile/dyed nylon F100%, anthrone © Rumina™ dyed nylon  
 Backing : Special PVC + glass non-woven fabric (weight-backing)

## SPECIFICATIONS

Total thickness : 8.0mm  
 Total size : 500.0 mm x 500.0 mm  
 Pile length : H 5.0mm / M3.5mm / L2.5mm  
 Pile density : 1/10 Gauge x 13.5 stitch  
 Total weight : 19.3 kg  
 Contents per carton : 16 sheets / case (=4 m<sup>2</sup>)

## PROPERTY

Antistatic : Built-up charge bellow 1 kV (23°C, 25% RH Synthetic shoe bed/ JIS L 4406)  
 Color fastness : Light over class 5 (JIS L 4406)  
 Flamemability : Flameproof performance test No. E1160215



4710-6601



4710-6602



4710-6603



4710-6601 / 497-6512

# MF 750

A dynamic marble pattern that creates new space

**MATERIAL**

Pile : Pile/dyed nylon F100%, anthrone © Rumina™ dyed nylon  
 Backing : Special PVC + glass non-woven fabric (weight-backing)

**SPECIFICATIONS**

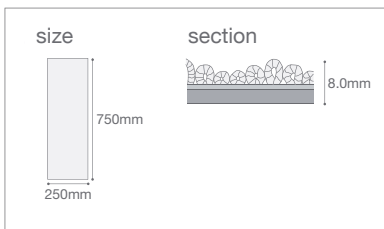
Total thickness : 8.0mm  
 Total size : 250.0mm x 750mm  
 Pile length : H 5.0mm / M3.5mm / L2.5mm  
 Pile density : 1/10 Gauge x 13.5 stitch  
 Total weight : 14.6 kg  
 Contents per carton : 16 sheets / case (=3 m<sup>2</sup>)

**PROPERTY**

Antistatic : Built-up charge bellow 1 kV (23°C, 25% RH Synthetic sole shoe/ JIS L 4406)  
 Color fastness : Light over class 5 (JIS L 4406)  
 Flamemability : Flameproof performance test No. E1160216



4720-6601,6603 / 4710-6603 (MF 500)



4720-6601



4720-6602



4720-6603

# SW 1000

A rustic texture is born, natural & deep

### MATERIAL

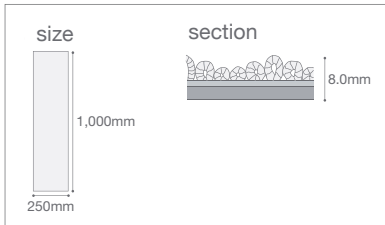
Pile : Pile/dyed nylon F100%, anthrone © Rumina™ lined nylon  
 Backing : Special PVC + glass non-woven fabric (weight reduction backing)

### SPECIFICATIONS

Total thickness : 8.0mm  
 Total size : 250.0mm x 1000.0mm  
 Pile length : H 5.0mm / M3.5mm / L2.5mm  
 Pile density : 1/10 Gauge x 13.5 stitch  
 Total weight : 14.6 kg  
 Contents per carton : 12 sheets / case (=3 m<sup>2</sup>)

### PROPERTY

Antistatic : Built-up charge bellow 1 kV (23°C, 25% RH Synthetic bottom shoe/ JIS L 4406)  
 Color fastness : Light over class 5 (JIS L 4406)  
 Flamemability : Flameproof performance test No. E1160217



4730-6701, 4740-6802



4730-6701



4730-6702



4730-6703



4730-6701, 4730-6702

# TAPIS NEBULA

Represent quietly boiling sea of clouds with overlapping colours & gradations Expression of a high quality with a pile structure and a sense of depth

## MATERIAL

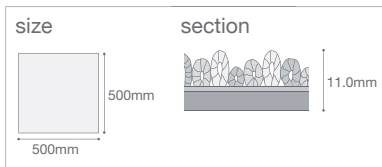
Pile : Pile/dyed nylon F100%  
 Backing : Special PVC + glass Fiber non-woven fabric (light)

## SPECIFICATIONS

Total thickness : 11.0mm  
 Total size : 500.0mm x 500.0mm  
 Pile length : High 6.5 to Low 2.5mm  
 Pile density : 1/10 Gauge x 13.5 stitch  
 Total weight : 16.1 kg  
 Contents per carton : 8 sheets / case (=2m<sup>2</sup>)

## PROPERTY

Antistatic : Built-up charge bellow 1 kV (23°C, 25% RH Synthetic bottom shoes/ JIS L 4406)  
 Color fastness : Light over class 5 (JIS L 4406)  
 Flamemability : Flameproof performance test No. E1140137



418-5601



418-5602



418-5603



418-5604



418-5605

# TAPIS REFINA

Warn of natural tress expressed in various colours

**MATERIAL**

Pile : Pile/dyed nylon F100%, anthrone® Rumina™ dyed nylon  
 Backing : Special PVC + glass non-woven fabric (weight backing)

**SPECIFICATIONS**

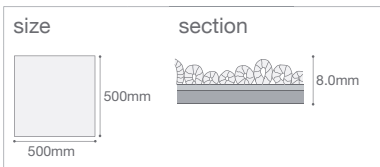
Total thickness : 8.0mm  
 Total size : 500.0mm x 500.0mm  
 Total weight : 18.6 kg  
 Contents per carton : 16 sheets / case (=4m²)

**PROPERTY**

Antistatic : Built-up charge bellow 1 kV (23°C, 25% RH Synthetic sole shoes/ JIS L 4406)  
 Color fastness : Light over class 5 (JIS L 4406)  
 Flamemability : Flameproof performance test No. ET 070263



432-2903



432-2902



432-2903



432-2904



432-2905



432-2907



432-2908



432-2909



432-2910





## VINYL TILE for RAISED-FLOOR

# LAY FLAT TILE LF-3000

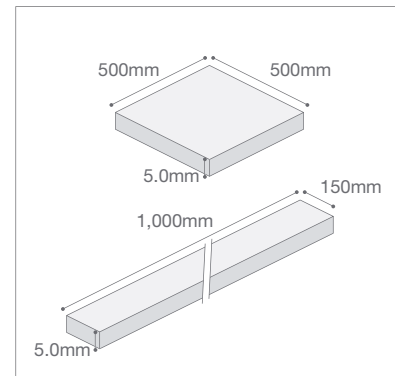
Design type of flooring design with high antifouling property by special UV coating vinyl floor tile in addition to double flooring.

It can be put on mortar base, floor heating base & so on well.

Use:

**Building:** Hospitals, welfare facilities, public facilities, office buildings, schools, commercial facilities, etc.

**Site:** Office, waiting room, hallway, lounge, classroom, etc.

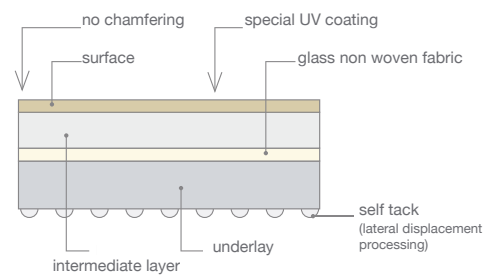


## SPECIFICATIONS

Thickness & Size : 5.0 x 500.0 x 500.0 mm  
Weight per roll : 21.2 kg

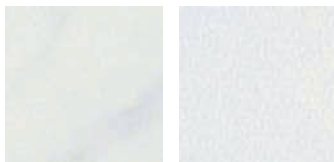
## TEST RESULT (JIS A 5705)

Subject	Result	Requirement
Thickness	: 4.98 mm	: 5.0 ± 0.3 mm
Size Width	: 499.80 mm	: 500 mm (± 0.50 mm)
Length	: 499.97 mm	: 500 mm (± 0.50 mm)
Weight	: 3.24 kg/m <sup>2</sup>	
Squareness	: 0.18 mm	: ≦ 0.25 mm
Indentation 20° C	: 0.80 mm	: ≧ 0.40 mm
	45° C : 1.50 mm	: ≧ 2.00 mm
Residual Indentation	: 5.7%	: ≦ 8.0%
<b>Dimensional stability bathed in hot air at 80 C, 6 hrs</b>		
Width	: 0.05%	: ≦ 0.15%
Length	: 0.04%	: ≦ 0.15%
Volatile loss	: 0.25%	: ≦ 0.75%
Slipperness	: 0.75%	
Abrasion	: 0.04% (JIS A 1451)	



## Stone Eye Tone

500 x 500



LF-3401

LF-3402



LF-3403

LF-3404

LF-3405

LF-3406

LF-3407

LF-3408

LF-3409

LF-3410



LF-3411

LF-3412

LF-3413

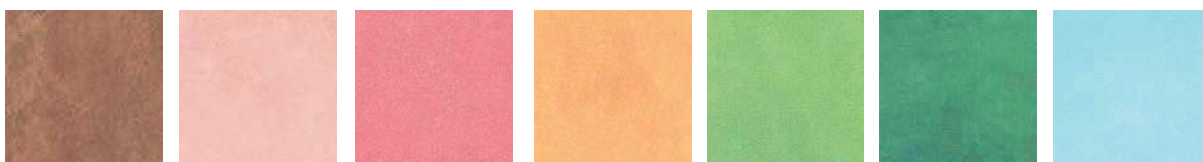
LF-3414

LF-3415

LF-3416

LF-3417

LF-3418



LF-3419

LF-3420

LF-3421

LF-3422

LF-3423

LF-3424

LF-3425

# LAY FLAT TILE LF-3000

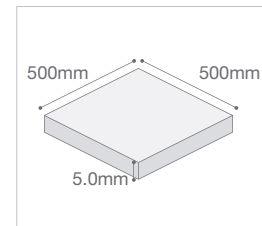
Design type of flooring design with high antifouling property by special UV coating vinyl floor tile in addition to double flooring.

It can be put on mortar base, floor heating base & so on well.

**Use:**

**Building:** Hospitals, welfare facilities, public facilities, office buildings, schools, commercial facilities, etc.

**Site:** Office, waiting room, hallway, lounge, classroom, etc.



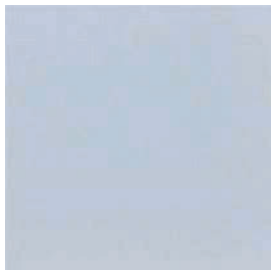
**SPECIFICATIONS**

Thickness & Size : 5.0 x 200 x 1,000 mm  
Weight per roll : 18 kg

**TEST RESULT**

**Electrical resistance**

	DS Floor	Requirement
Surface	: $7.0 \times 10^{\circ}\Omega$	: $\leq 2.5 \times 10^{\circ}\Omega \leq 1.0 \times 10^{\circ}\Omega$
Volume	: $4.3 \times 10^{\circ}\Omega$	: $\leq 2.5 \times 10^{\circ}\Omega$



LF-2101



LF-2102



LF-2103



LF-2105



LF-2106



LF-2107



LF-2106

## LAY FLAT TILE LF-2000

In addition to double flooring, it can be put on dry mortar base, floor heating base & so on. It is a vinyl floor tile that restores to the low price

**Use:**

**Building:** Educational facilities, medical, welfare facilities, public facilities, office building, etc

**Site:** Office, classroom, hall, etc.

**SPECIFICATIONS**

Thickness & Size : 5.0 x 500.0 x 500.0 mm

Weight per roll : 21.2 kg

**TEST RESULT**

**Electrical resistance**

1.0 kV or less (JIS L1021-16)

### Stone Eye Tone

200 x 1000 mm



LF-3426



LF-3427



LF-3428



LF-3429

# LAY FLAT TILE LF-3000

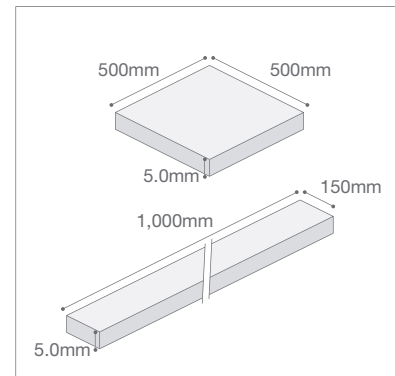
Design type of flooring design with high antifouling property by special UV coating vinyl floor tile in addition to double flooring.

It can be put on mortar base, floor heating base & so on well.

Use:

**Building:** Hospitals, welfare facilities, public facilities, office buildings, schools, commercial facilities, etc.

**Site:** Office, waiting room, hallway, lounge, classroom, etc.

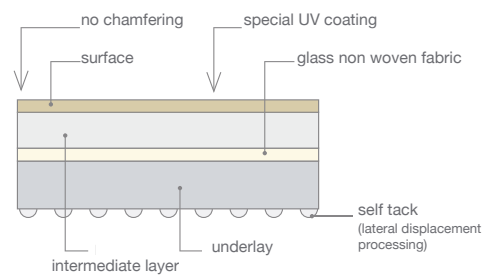


## SPECIFICATIONS

Thickness & Size : 5.0 x 500.0 x 500.0 mm  
Weight per roll : 21.2 kg

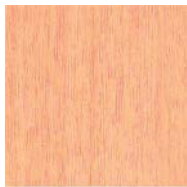
## TEST RESULT (JIS A 5705)

Subject	Result	Requirement
Thickness	: 4.98 mm	: 5.0 ± 0.3 mm
Size Width	: 499.80 mm	: 500 mm (± 0.50 mm)
Length	: 499.97 mm	: 500 mm (± 0.50 mm)
Weight	: 3.24 kg/m <sup>2</sup>	
Squareness	: 0.18 mm	: ≦ 0.25 mm
Indentation 20° C	: 0.80 mm	: ≧ 0.40 mm
	45° C : 1.50 mm	: ≦ 2.00 mm
Residual Indentation	: 5.7%	: ≦ 8.0%
<b>Dimensional stability bathed in hot air at 80 C, 6 hrs</b>		
Width	: 0.05%	: ≦ 0.15%
Length	: 0.04%	: ≦ 0.15%
Volatile loss	: 0.25%	: ≦ 0.75%
Slipperness	: 0.75%	
Abrasion	: 0.04% (JIS A 1451)	



## Wood Grain

500 x 500



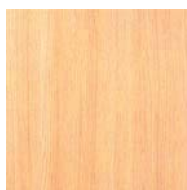
LF-3302



LF-3313



LF-3315



LF-3501



LF-3502



LF-3503



LF-3504



# LAY FLAT TILE LF-3000

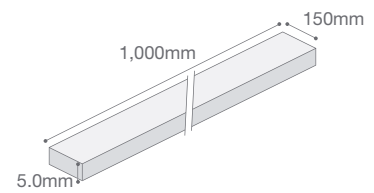
Design type of flooring design with high antifouling property by special UV coating vinyl floor tile in addition to double flooring.

It can be put on mortar base, floor heating base & so on well.

**Use:**

**Building:** Hospitals, welfare facilities, public facilities, office buildings, schools, commercial facilities, etc.

**Site:** Office, waiting room, hallway, lounge, classroom, etc.



**SPECIFICATIONS**

Thickness & Size : 5.0 x 150 x 1,000 mm  
Weight per roll : 18 kg

**TEST RESULT**

**Electrical resistance**

	DS Floor	Requirement
Surface	: 7.0x 10°Ω	: ≦ 2.5 x 10°Ω ≧ 1.0 x 10°Ω
Volume	: 4.3 x 10°Ω	: ≦ 2.5 x 10°Ω

**Wood Grain**

150 x 1000 mm



LF-3508



LF-3509



LF-3510



LF-3511



LF-3512



LF-3513



LF-3514



LF-3515



LF-3516



LF-3517



LF-3518



LF-3519



LF-3520



LF-3521



LF-3522



LF-3523



LF-3525

**SLIP RETARDANT  
SHEET VINYL  
FLOORING**



# SR-SHEET 4300

**Mechanical embossed to achieve slipperiness.**  
**Indoor anti-slip vinyl sheet with decorative & safety features.**  
**Flameproofing performance (ET 900230)**

**Use:**

**Building:** School, office, multi-family residence, etc

**Site:** Elevator, corridor, slope, etc.

**SPECIFICATIONS**

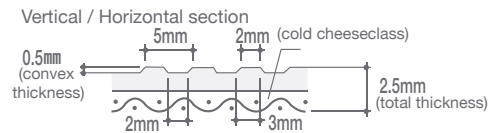
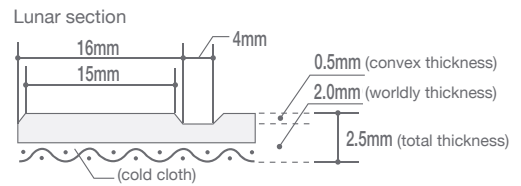
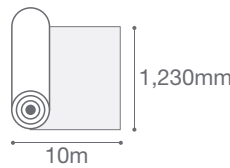
Thickness & Size : 2.5 x 1.230 x 10,000 mm  
 Weight per roll : 34.2 kg

**TEST RESULT (JIS A 5705)**

Subject	Result	Requirement
Thickness	: 2.5 mm	: 2.5 mm ± 10%
Size Width	: 1,242 mm	: 1,230-1,250 mm
Length	: 10.14 mm	: ≧ 10,000 mm
Residual Indentation	: 3.5%	: ≦ 25%

**Dimensional stability bathed in hot air at 80 C, 6 hrs**

Width	: 0.39%	: ≦ 2.0%
Length	: 0.60%	: ≦ 2.0%
Volatile loss	: 0.28%	: ≦ 0.5%
Slipperiness	: 0.80	
Abrasion	: 0.08% (JIS A 1451)	



**Lunar Type**



111



112



114

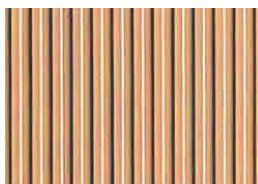


115

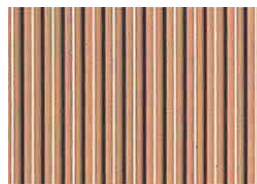


116

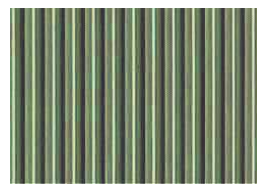
**Rib (Vertical) Type**



151



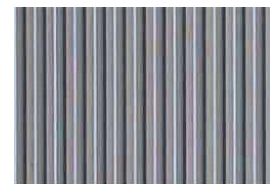
152



154

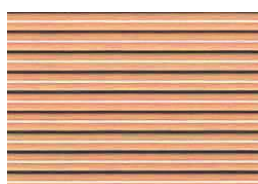


155



156

**Rib (Horizontal) Type**



161



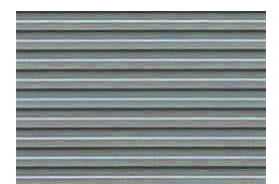
162



164



165



166



## SR-SHEET 2800

Improved lubricity by embossing & improved dirt resistance.  
Indoor Low Cost Anti-Vinyl Floor Sheet

**Use:**

**Building:** Welfare facility, hospital, school, office, multi-family residence, etc

**Site:** Elevator, corridor, slope, etc.

**SPECIFICATIONS**

Thickness & Size : 2.0 x 1,820 x 9,000 mm  
Weight per roll : 43.9 kg

**TEST RESULT (JIS A 5705)**

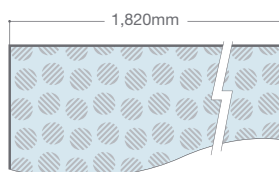
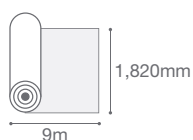
Subject	Result	Requirement
Thickness	: 2.08 mm	: 2.0 mm ± 10%
Size Width	: 1,825 mm	: 1,820-1,840 mm
Length	: 9,06 mm	: ≧ 9,000 mm
Residual Indentation	: 10.1%	: ≦ 25%

**Dimensional stability bathed in hot air at 80 C, 6 hrs**

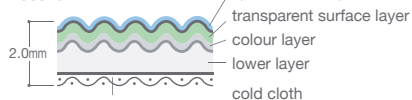
Width	: 0.18%	: ≦ 0.2%
Length	: 0.60%	: ≦ 0.2%
Volatile loss	: 0.27%	: ≦ 0.5%
Slipperness	: 0.76	
Abrasion	: 0.05 mm (JIS A 1451)	



size



Section



PE-21



PE-22



PE-23



PE-24



PE-25

# VIEW GISTA AQUA

- \* Ultraviolet rays & rainwater that is hard to slip & walking feeling that is hard to slip when wet
- \* Prevent deterioration of the building due to invasion of rainwater
- \* Easy to clean, performance resistant to durable & permanent use.
- \* Reduce the shoes that resonate late at night & early in the morning
- \* Ensure the visibility go the stairs easy for the elderly to use.

**Use:**

**Building:** Apartment house, etc

**Site:** Common corridor, stairs, balcony, indoor & outdoor passage, concourse, entrance, etc.

**SPECIFICATIONS**

Thickness & Size : 2.5 x 1,820 x 10,000 mm  
 Weight per roll : 55.4 kg

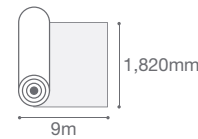
**TEST RESULT (JIS A 5705)**

Subject	Result	Requirement
Thickness	: 2.51 mm	: ~10% ± 10%
Size Width	: 1,825 mm	: ≧ 1,820 mm
Length	: 10,26 mm	: ≧ 10,000 mm
Residual Indentation	: 13.1%	: ≦ 25%

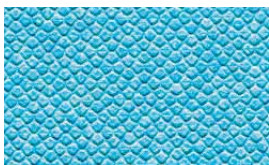
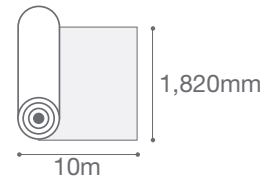
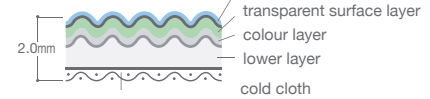
**Dimensional stability bathed in hot air at 80 C, 6 hrs**

Width	: 0.05%	: ≦ 2.0%
Length	: 0.04%	: ≦ 2.0%
Volatile loss	: 0.37%	: ≦ 1.0%
Slipperiness	: 0.85	
Abrasion	: 0.03 mm (JIS A 1451)	

size



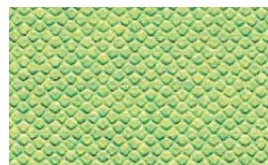
Section



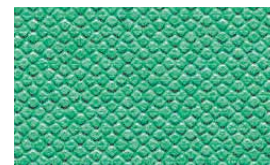
VAQ-801



VAQ-802



VAQ-803



VAQ-804



VAQ-805



VAQ-806



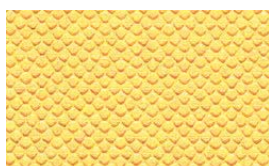
VAQ-807



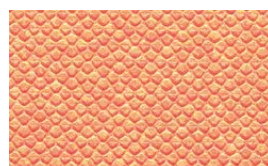
VAQ-808



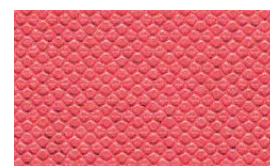
VAQ-809



VAQ-810



VAQ-811



VAQ-812

## VIEW GISTA GRAN-GIO

The inlaid structure which thickened the colour pattern layer on the surface maintains the design for a long time.

- \* Ultraviolet rays & rainwater that is hard to slip & walking feeling that is hard to slip when wet
- \* Prevent deterioration of the building due to invasion of rainwater
- \* Easy to clean, performance resistant to durable & permanent use.
- \* Reduce the shoes that resonate late at night & early in the morning
- \* Ensure the visibility go the stairs easy for the elderly to use.

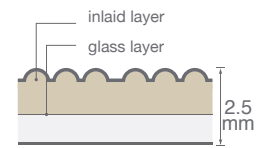
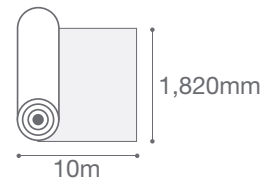
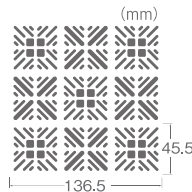
### Use:

**Building:** Apartment house, etc

**Site:** Common corridor, stairs, balcony, indoor & outdoor passage, concourse, entrance, etc.

### SPECIFICATIONS

Thickness & Size	: 2.5 x 1,250 x 10,000 mm
	: 2.5 x 1,350 x 10,000 mm
	: 2.5 x 1,620 x 10,000 mm
	: 2.5 x 1,820 x 10,000 mm
Weight per roll	: 31.8 kg (1,250 mm)
	: 34.3 kg (1,350 mm)
	: 41.1 kg (1,620 mm)
	: 46.1 kg (1,820 mm)



VGG-701



VGG-702



VGG-703



VGG-704



VGG-705



VGG-706



VGG-707

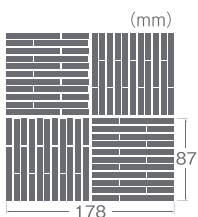


VGG-708

## VIEW GISTA GRAN-BLOCK

### SPECIFICATIONS

Thickness & Size	: 2.5 x 1,350 x 10,000 mm
	: 2.5 x 1,620 x 10,000 mm
	: 2.5 x 1,820 x 10,000 mm
Weight per roll	: 34.3 kg (1,350 mm)
	: 41.1 kg (1,620 mm)
	: 46.1 kg (1,820 mm)



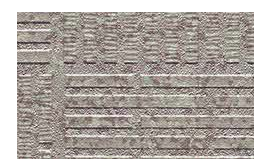
VGG-706



VGG-706



VGG-706



VGG-706



VGG-706

# VIEW GISTA MULTI

By expressing complicated texture.

We created realistic texture

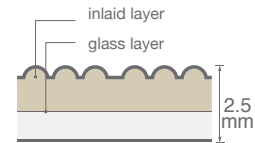
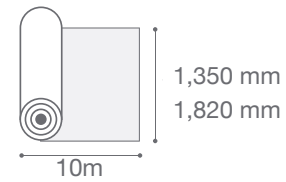
\* Ultraviolet rays & rainwater that is hard to slip & walking feeling that is hard to slip when wet

\* Prevent deterioration of the building due to invasion of rainwater

\* Easy to clean, performance resistant to durable & permanent use.

\* Reduce the shoes that resonate late at night & early in the morning

\* Ensure the visibility go the stairs easy for the elderly to use.



## Use:

**Building:** Apartment house, etc

**Site:** Common corridor, stairs, balcony, indoor & outdoor passage, concourse, entrance, etc.

## Hardwood Type

### SPECIFICATIONS

Thickness & Size : 2.5 x 1,350 x 10,000 mm  
: 2.5 x 1,820 x 10,000 mm

Weight per roll : 36.8 kg (1,350 mm)  
: 49.5 kg (1,820 mm)



VML-630



VML-631



VML-632



VML-633

## Lattice Type

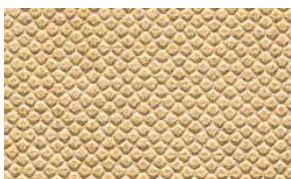
### SPECIFICATIONS

Thickness & Size : 2.5 x 1,350 x 10,000 mm  
: 2.5 x 1,620 x 10,000 mm  
: 2.5 x 1,820 x 10,000 mm

Weight per roll : 36.8 kg (1,350 mm)  
: 44.1 kg (1,620 mm)  
: 49.5 kg (1,820 mm)



VML-600



VML-601



VML-602



VML-603



VML-603

# VIEW GISTA MULTI

Texture of natural stone whose pattern changes according to viewing angle

**Use:**

**Building:** Apartment house, etc

**Site:** Common corridor, stairs, balcony, indoor & outdoor passage, concourse, entrance, etc.

**Sagan Type**

**SPECIFICATIONS**

Thickness & Size : 2.5 x 1,350 x 10,000 mm  
 : 2.5 x 1,820 x 10,000 mm  
 Weight per roll : 36.8 kg (1,350 mm)  
 : 49.5 kg (1,820 mm)



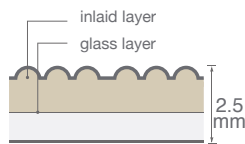
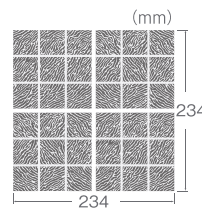
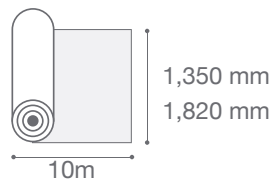
VML-611



VML-610



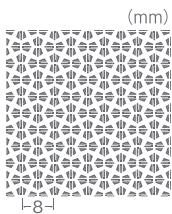
VML-611



**Stripe Type**

**SPECIFICATIONS**

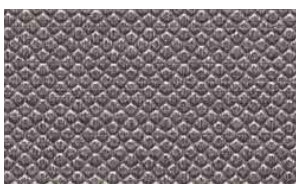
Thickness & Size : 2.5 x 1,350 x 10,000 mm  
 : 2.5 x 1,820 x 10,000 mm  
 Weight per roll : 36.8 kg (1,350 mm)  
 : 49.5 kg (1,820 mm)



\*please note that pattern matching is not possible



VML-621



VML-620



VML-621



VML-622

# VIEW GISTA SAND

It is a basic & calm design that chooses space

**Use:**

**Building:** Apartment house, etc

**Site:** Common corridor, stairs, balcony, indoor & outdoor passage, concourse, entrance, etc.



VSH-401

**Hexa Type**

**SPECIFICATIONS**

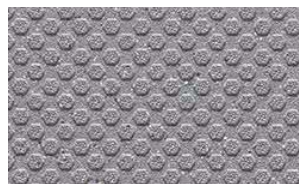
- Thickness & Size  
 : 2.5 x 1,350 x 10,000 mm  
 : 2.5 x 1,620 x 10,000 mm  
 : 2.5 x 1,820 x 10,000 mm
- Weight per roll  
 : 36.1 kg (1,350 mm)  
 : 43.2 kg (1,620 mm)  
 : 48.5 kg (1,820 mm)



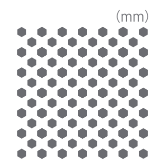
VSH-401



VSH-402



VSH-403



\*please note that pattern matching is not possible



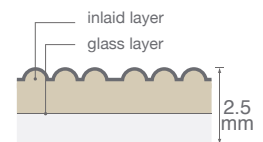
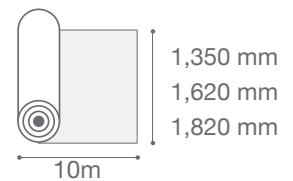
VSH-404



VSH-405



VSH-406



**Stone Type**

**SPECIFICATIONS**

- Thickness & Size  
 : 2.5 x 1,350 x 10,000 mm  
 : 2.5 x 1,820 x 10,000 mm
- Weight per roll  
 : 36.1 kg (1,350 mm)  
 : 48.5 kg (1,820 mm)



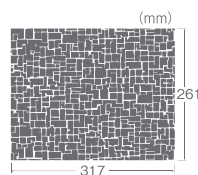
VSS-402



VSS-403



VSS-404



VSS-402

## VIEW GISTA PLUS

It is a basic & calm design that chooses space

**Use:**

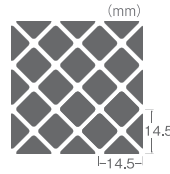
**Building:** Apartment house, etc

**Site:** Common corridor, stairs, balcony, indoor & outdoor passage, concourse, entrance, etc.

**Easy Cleaning type**

**SPECIFICATIONS**

Thickness & Size : 2.5 x 1,350 x 10,000 mm  
 : 2.5 x 1,820 x 10,000 mm  
 Weight per roll : 37.4 kg (1,350 mm)  
 : 50.2 kg (1,820 mm)



\*please note that pattern matching is not possible



conventional vinyl



Tajima vinyl (easy to clean)  
 shape designed to sweep out sand & dust



VPC-401



VPC-402



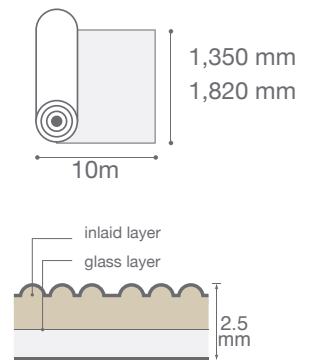
VPC-401



VPC-403



VPC-404



**Thermal insulation type**

**SPECIFICATIONS**

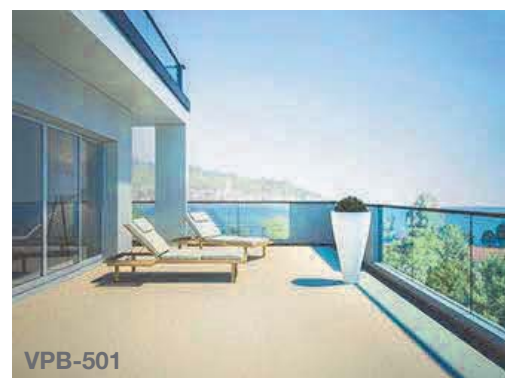
Thickness & Size : 2.5 x 1,350 x 10,000 mm  
 : 2.5 x 1,820 x 10,000 mm  
 Weight per roll : 26.9 kg (1,350 mm)  
 : 36.1 kg (1,820 mm)



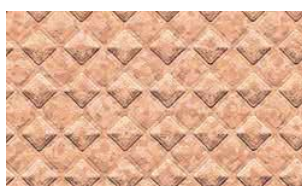
VPB-501



VPB-502

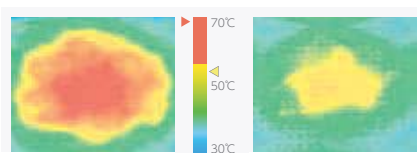


VPB-501



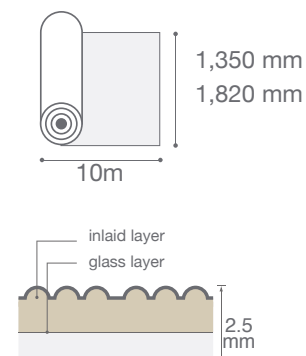
VPB-503

comparison of surface temperature



conventional product  
 69°C/max

Tajima thermal insulation  
 53°C/max



## VIEW GISTA PLUS

It is a basic & calm design that chooses space

### Use:

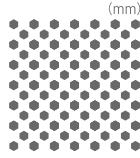
**Building:** Apartment house, etc

**Site:** Common corridor, stairs, balcony, indoor & outdoor passage, concourse, entrance, etc.

### Ease of sound saving type

#### SPECIFICATIONS

Thickness & Size : 3.5 x 1,350 x 10,000 mm  
Weight per roll : 37.6 kg (1,350 mm)



\*please note that pattern matching is not possible



VPA-401



VPA-402



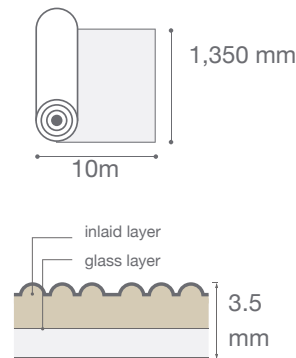
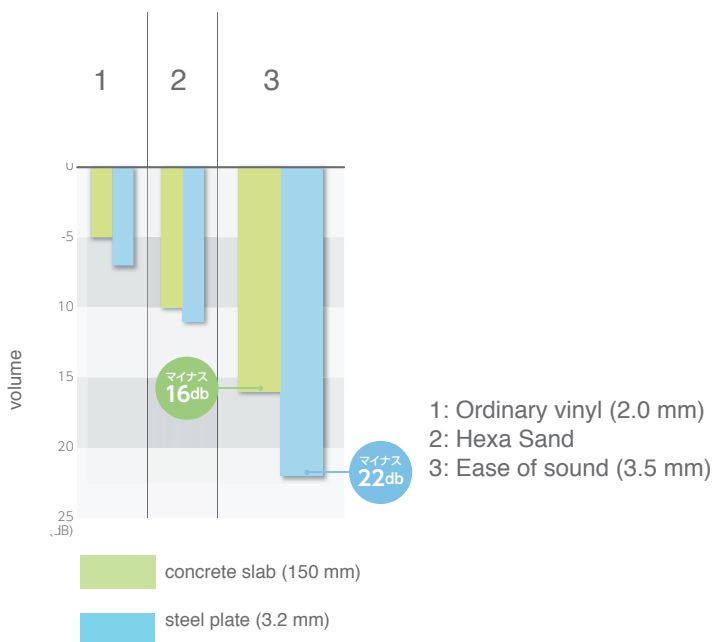
VPA-403



VPA-404



### Comparison of vinyl (db)





## VIEW GISTA AQUA

### Inlaid design series for poolside

**Use:**

**Building:** Apartment house, etc

**Site:** Common corridor, stairs, balcony, indoor & outdoor passage, concourse, entrance hall, etc.

**SPECIFICATIONS**

Thickness & Size : 2.5 x 1,382 x 10,000 mm

Weight per roll : 45.7 kg

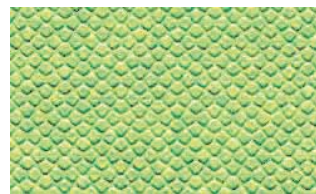
\*please note that pattern matching is not possible



VAQ-801



VAQ-802



VAQ-803



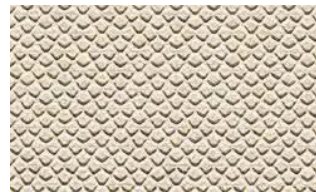
VAQ-804



VAQ-805



VAQ-806



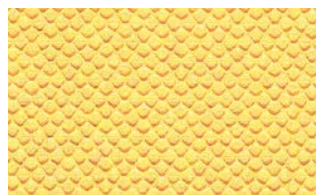
VAQ-807



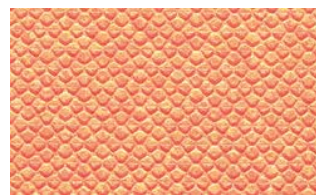
VAQ-808



VAQ-809



VAQ-810



VAQ-811



VAQ-812

# VST AQUA



VOC対策品



## Inlaid design series for poolside

### Use:

**Building:** Apartment house, etc

**Site:** Common corridor, stairs, balcony, indoor & outdoor passage, concourse, entrance hall, etc.

### SPECIFICATIONS

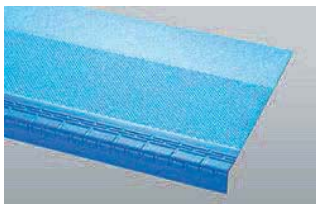
Thickness & Size : 1.8 x 1,350 x 10,000 mm  
 Weight per roll : 27.0 kg

\*please note that pattern matching is not possible

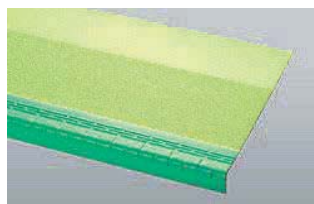


VST-801, VGK-801

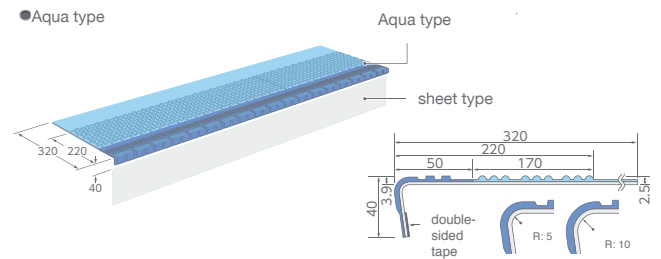
## View distortion step



VST-801



VST-803



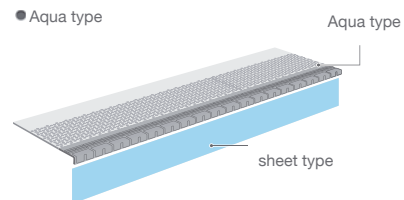
## Conveying seat



VAQ-809



VAQ-809





# FUNCTION FLOORING

# M FLOOR

Functional single layer vinyl floor sheet having dynamic load resistance, antistatic property, chemical resistance & abrasion resistance

**Use:**

**Building:** Hospitals, production facilities (semiconductors, components of computer electronics, medicine, cosmetics, food, etc)

**public facilities, sports facilities, etc**

**Site:** Operating room zone, parts where automated guided vehicles & forklift trucks, moving seats part, etc

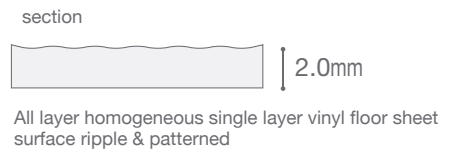
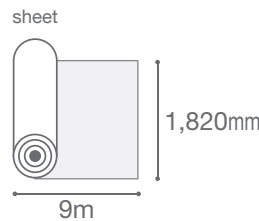


**SPECIFICATIONS**

Thickness & Size : 2.00 x 1,820 x 9000 mm  
Weight per roll : 50.6 Kg

**TEST RESULT (JIS A 5705)**

Subject	Result	Requirement
Electrical Resistance	(JIS K 6911)	
Surface	: $7.2 \times 10^{\circ}\Omega$	: $\leq 1.0 \times 10^{\circ}\Omega$
Volume	: $1.9 \times 10^{\circ}\Omega$	: $\leq 5.0 \times 10^{\circ}\Omega$
Moving load resistance over 900 cycle (98 ON)		



No. 161 KD-161



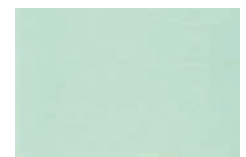
No. 164 KD-164



No. 169 KD-169



No. 170 KD-170



No. 172 KD-172



No. 174



No. 175



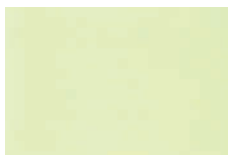
No. 176



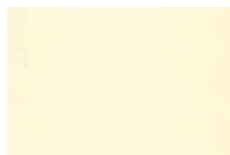
No. 177



No. 178



No. 179



No. 180



No. 181



No. 182



No. 183



No. 184



No. 169

# ANTISTAR SHEET

A vinyl floor sheet that is effective at preventing inadvertent absorption of dust by static electricity & quickly leaking human body charge at low cost

**Use:**

**Building:** production facilities (electronic equipment, precision machinery, semiconductors, etc)

**Site:** Clean room, computer centre, general computer room, etc

**SPECIFICATIONS**

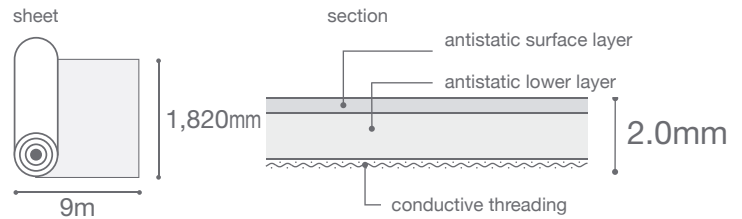
Thickness & Size : 2.00 x 1,820 x 9,000 mm  
Weight per roll : 50.6 Kg

**TEST RESULT (JIS A 5705)**

Subject	Result	Requirement
Thickness	: 1.97 mm	: 2.0 ± 0.20 mm
Size Width	: 1,828 mm	: ≧ 1,820 mm (±0-20 mm)
Length	: 9,10 mm	: ≧ 9,000 mm
Weight	: 3.24 kg/m <sup>2</sup>	
Indentation 20° C	: 0.78 mm	: ≧ 0.3 mm
45° C	: 1.10 mm	: ≦ 1.5 mm
Residual Indentation	: 6.4%	: ≦ 25%

**Dimensional stability bathed in hot air at 80 C, 6 hrs**

Width	: 0.07%	: ≦ 2.0%
Length	: 0.59%	: ≦ 2.0%
Volatile loss	: 0.29%	: ≦ 0.50%
Slipperness	: 0.90	
Abrasion	: 0.096mm	(JIS A 1451)
<b>Electrical resistance (JIS K 6911)</b>		
Surface	: 9.3 x 10 <sup>6</sup> Ω	: ≦ 5.0 x 10 <sup>6</sup> Ω
Volume	: 1.8 x 10 <sup>6</sup> Ω	: ≦ 1.0 x 10 <sup>6</sup> Ω



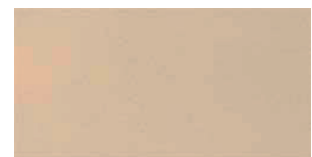
No. 903



No. 904



No. 905



No. 953

# ANTISTAR TILE C

Functional vinyl floor material (specialized for performance)

**Use:**

**Building:** Public facilities, office building, etc

**Site:** Electronic calculation room, precision machine room, etc

**SPECIFICATIONS**

Thickness & Size : 2.00 x 504.0 x 504.0 mm  
 Weight per roll : 25.3 kg

**TEST RESULT (JIS A 5705)**

Subject	Result	Requirement
Thickness	: 1.90 mm	: 2.0 ± 0.15 mm
Size Width	: 504.92 mm	: 504 mm (± 1.0 mm)
Length	: 504.86 mm	: 504 mm (± 1.0 mm)
Weight	: 3.24 kg/m <sup>2</sup>	
Squareness	: 0.10 mm	: ≤ 0.25
Indentation 20° C	: 0.38 mm	: ≥ 0.25 mm
45° C	: 0.57 mm	: ≤ 0.80 mm
Residual Indentation	: 6.5%	: ≤ 8.0%

**Dimensional stability bathed in hot air at 80 C, 6 hrs**

Width	: 0.08%	: ≤ 0.3%
Length	: 0.23%	: ≤ 0.3%

**Dimensional stability bathed in hot air at 20 C, 120 hrs**

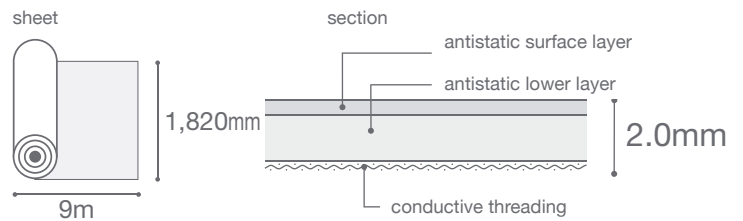
Width	: 0.74%	: ≤ 0.9%
Length	: 0.10%	: ≤ 0.9%
Volatile loss	: 0.20%	: ≤ 0.5%

Slipperness : 0.80% (JIS A 5705)

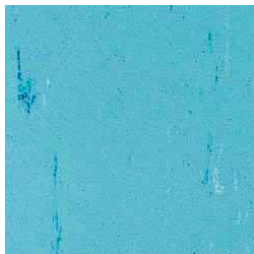
Abrasion : 0.33% (JIS A 1451)

**Electrical resistance (JIS K 6911)**

Surface	: 9.3 x 10 <sup>9</sup> Ω	: ≤ 5.0 x 10 <sup>9</sup> Ω
Volume	: 1.8 x 10 <sup>9</sup> Ω	: ≤ 1.0 x 10 <sup>9</sup> Ω



No. 1



No. 14



No. 17



No. 18



No. 29



No. 34



No. 35



No. 38



No. 61

## MD II



Functional vinyl floor material (specialized in performance)

**Use:**

**Building:** Public facilities, office building, etc

**Site:** Electronic calculation room, precision machine room, etc

**SPECIFICATIONS**

Thickness & Size : 2.00 x 1,820 x 9,000 mm  
 Weight per roll : 53.5 kg

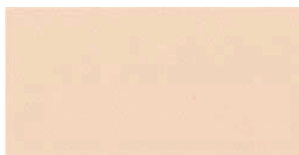
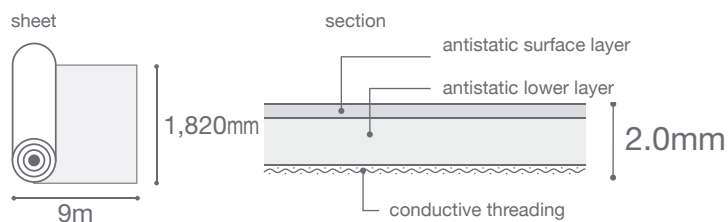
**TEST RESULT (JIS A 5705)**

Reagent	MD II Floor	Other vinyl sheets
Chemical resistant	A	B
HCL (10%)	A	B
H <sub>2</sub> SO <sub>4</sub> (40%)	A	B
CH <sub>3</sub> COOH (10%)	A	B
CH <sub>3</sub> CH(OH)COOH (20%)	A	B
Ca(OH) <sub>2</sub> (saturated)	A	A
NaOH (20%)	A	B
KI (1%)	C	A
C <sub>6</sub> H <sub>6</sub>	C	C
CH <sub>3</sub> CH <sub>2</sub> OCH <sub>2</sub> CH <sub>3</sub>	A	C
A Developing solution	A	A

**Electrical resistance (JIS K 6911)**

Surface : 9.3 x 10<sup>9</sup>Ω : ≦ 5.0 x 10<sup>9</sup>Ω  
 Volume : 1.8 x 10<sup>9</sup>Ω : ≦ 1.0 x 10<sup>9</sup>Ω

- \* A: No change
- \* B: change in colours
- \* C: partially damaged



MD-1203E



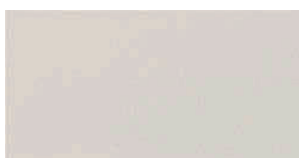
MD-1206E



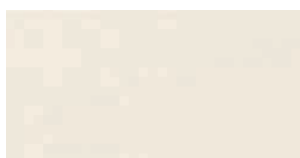
MD-1209E



MD-1210E



MD-1211E



MD-1216E



MD-1220E



MD-1224E

# DS FLOOR

**Functional vinyl floor material (specialized in performance)**  
**Conductive performance that is hardly influenced by humidity, specialized for human body antistatic effect**

**Use:**

**Building:** Production facility (super LSI, rocket, artificial satellite control device, etc)

**Site:** Assembling process of printed wiring board using semiconductor device, processing/ assembly/ inspection process of electronic equipment parts, operating room, MRI room, etc

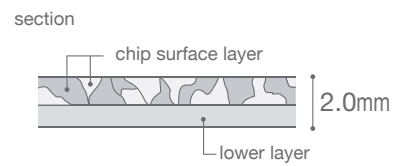
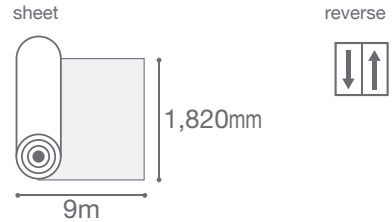
**SPECIFICATIONS**

Thickness & Size : 2.00 x 1,820 x 9,000 mm  
 Weight per roll : 44.5 kg

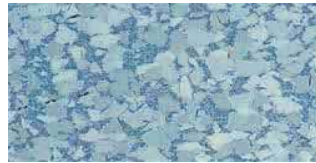
**TEST RESULT**

**Electrical resistance**

	DS Floor	Requirement
Surface	: $7.0 \times 10^{\circ}\Omega$	: $\leq 2.5 \times 10^{\circ}\Omega \leq 1.0 \times 10^{\circ}\Omega$
Volume	: $4.3 \times 10^{\circ}\Omega$	: $\leq 2.5 \times 10^{\circ}\Omega$



DS-511



DS-512



DS-531



DS-532



DS-531



# DS FLOOR

**Functional vinyl floor material (specialized in performance)**  
**Conductive performance that is hardly influenced by humidity, specialized for human body antistatic effect**

**Use:**

**Building:** Production facility (super LSI, rocket, artificial satellite control device, etc)

**Site:** Assembling process of printed wiring board using semiconductor device, processing/ assembly/ inspection process of electronic equipment parts, operating room, MRI room, etc

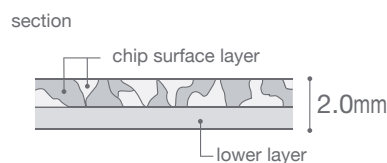
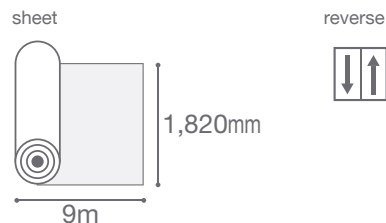
**SPECIFICATIONS**

Thickness & Size : 2.00 x 1,820 x 9,000 mm  
 Weight per roll : 44.5 kg

**TEST RESULT**

**Electrical resistance**

	DS Floor	Requirement
Surface	: $7.0 \times 10^9 \Omega$	: $\leq 2.5 \times 10^9 \Omega \leq 1.0 \times 10^{10} \Omega$
Volume	: $4.3 \times 10^9 \Omega$	: $\leq 2.5 \times 10^9 \Omega$



DS-511



DS-512



DS-531



DS-532



DS-531



**PT SUMBER SETIA ABADI**  
BUILDING INTERIOR SOLUTIONS

[www.sumbersetia.com](http://www.sumbersetia.com)



Showroom

Jl. Tomang Raya no. 15  
Jakarta 11440, Indonesia

p. (+62-21) 5601078/9

f. (+62-21) 5601083, 5601069

Branch:

Jl. Ngemplak 30, Komp. Ambengan Plaza Blok B No. 21  
Surabaya, Indonesia

p. (+62-31) 5451133 (Hunting), (+62-31) 5459331

f. (+62-31) 5317145