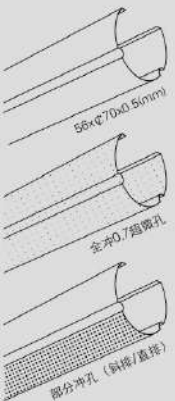
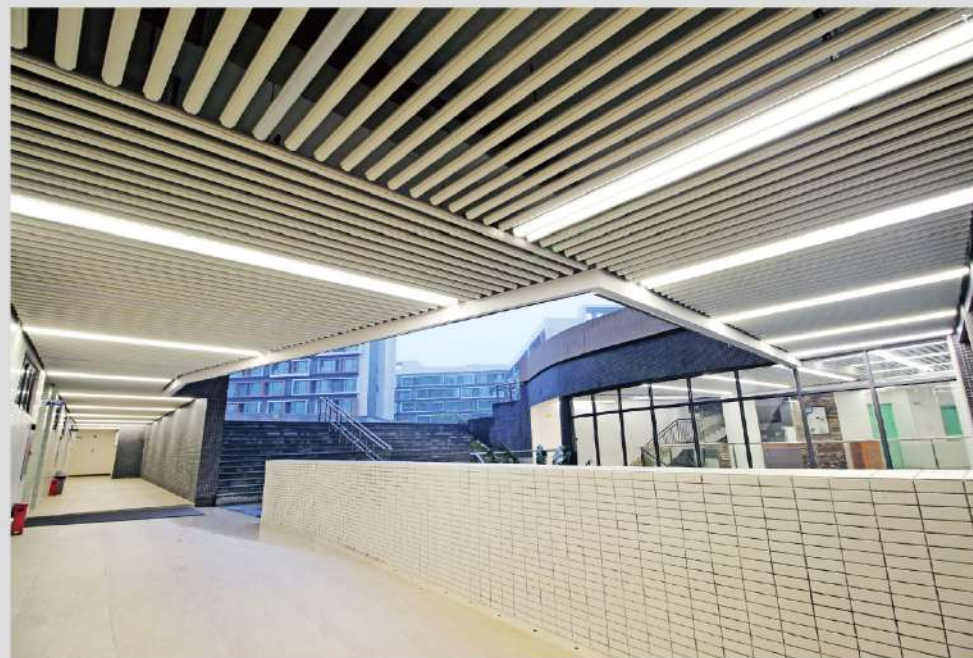


COMPTON - Solingen 索林根挂片
Solingen Linear



- 柔和圆润的外观，开敞便捷的吊装。
- 配有同样完整造型的专用灯具及端口密封盖。
- 可与U型组合系统及贝尔根挂片在同一系统自由灵活组合。

- Fine, smooth and compact.
- With integrated "Solingen" lighting fixture.
- Combined design with Compton strip ceiling series on same suspension system.



COMPTON METAL CEILING SYSTEMS
至高金属天花系统

- | | |
|------------------------|---|
| 1 香港游泳馆 | 1 Hongkong natatorium |
| 2 索林根多种颜色组合
重庆地铁六号线 | 2 Solingen color combinations
Chongqing metro line six |
| 3 索林根一体式灯具
港会大学 | 3 Solingen LED Light
Hong Kong Baptist University |



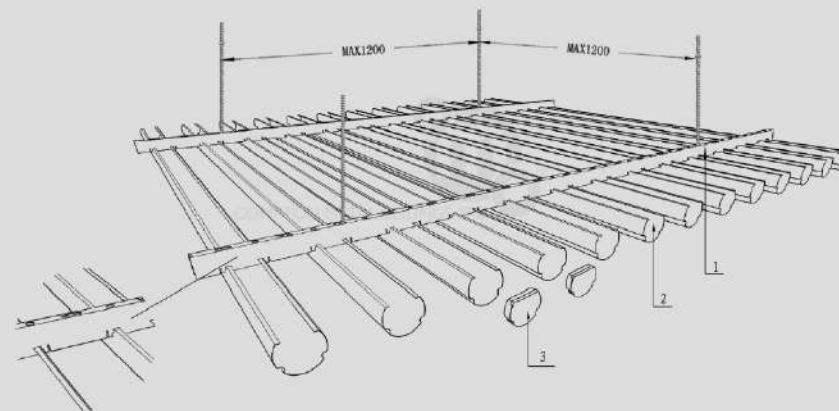
索林根灯具 Solingen Lighting

- 可选用T5日光灯管，或者节能环保及寿命长的LED作为光源
- 选用LED光源时，长度可定制6米以内的任意尺寸
- 选用T5日光灯管时，长度为6米以内，1.2/1.5/1.8米的倍数尺寸

Choice of lamp:

- T5 fluorescent tube (interval length of 1200/1500/1800mm)
- LED light (continuous length up to 6000mm)

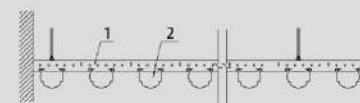
专利号: ZL 2013 3 0021915.7 ZL 2013 2 0038479.9



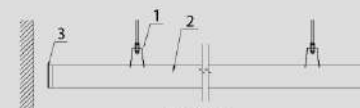
OFF



ON



纵向节点图
Front Detail Drawing



横向节点图
Left Detail Drawing



- 1 索林根灯具关闭时与索林根挂片融为一体
- 2 开启时光线柔和均匀，无阴影，高效节能
- 3 索林根挂片装配特别索林根灯具效果

- 1 Solingen Lights and Solingen Linear blend into the environment when lights off.
- 2 Soft and uniform light, high-efficiency and energy-saving
- 3 Install with Solingen Lighting

	1.索林根龙骨 Solingen Carrier	2.索林根天花板 Solingen Ceiling	3.索林根封口盖 End Cover For Solingen
尺寸 Dimensions	18 × 37 × 0.6mm	56 × φ 70 × 0.5mm	56 × φ 70 × 2.0mm
结构图 Construction			

专利号: ZL 2011 2 0090889.0



© Copyright 所有者德國康普頓集團。未經本集團書面授權，不得以任何形式進行複製、摘錄或其他商業用途，違者必究。