



PT SUMBER SETIA ABADI  
BUILDING INTERIOR SOLUTIONS

# LUXURY VINYL TILE & PLANK







## Woodline Series

Every pattern, every grain inscribed within Woodline series has been textured to the absolute limit of cutting-edge printing technology.

Diverse selection of textured wooden pattern are available to make any interior ideas come true.

Woodline will look, touch, and feels like wood. No need to cut an actual tree for flooring material. Woodline got you covered.



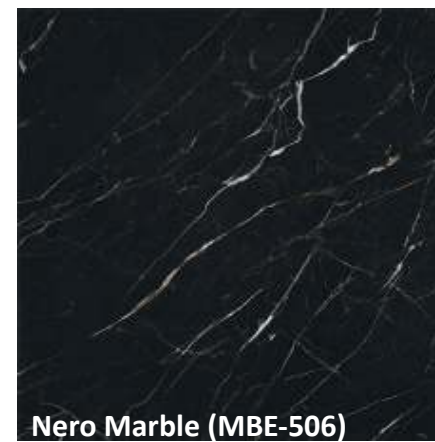




## Matil Series

With more than 100 years of experience manufacturing vinyl based building materials. We know exactly how to create highly realistic design.

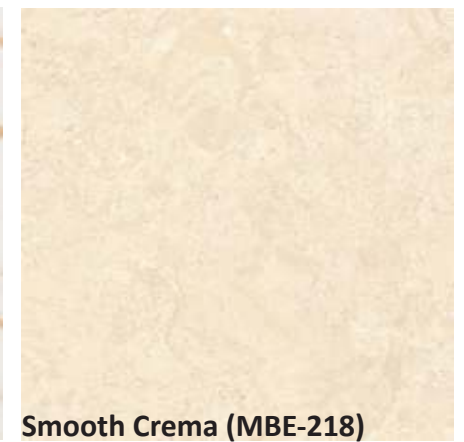
Our flooring material could even grant you the finest italian marble without the hassle of sealing and polishing.



Nero Marble (MBE-506)



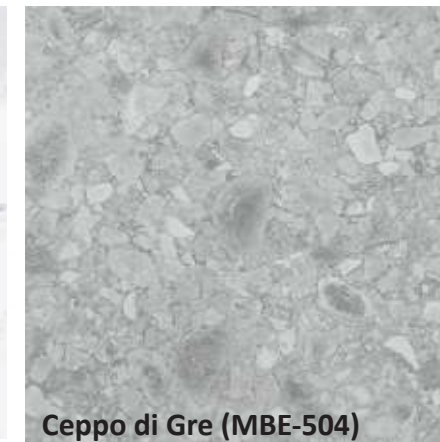
Calacatta Gold (MBE-505)



Smooth Crema (MBE-218)



Ajax Hard (MBE 102)



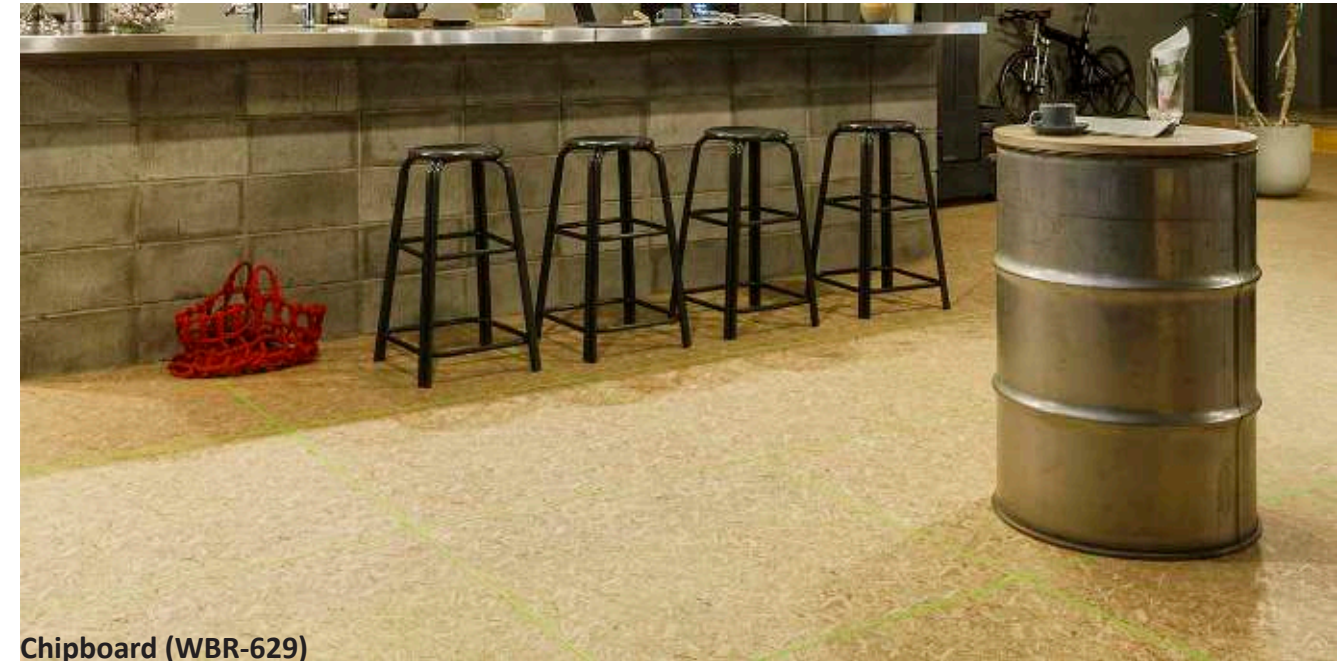
Ceppo di Gre (MBE-504)





# Abstract Design

Bored with just wood and marble? Unleash your creativity with abstract design. Available in dozens of choices, our vinyl tiles can fit in any interior imaginable!



Chipboard (WBR-629)



## Terahno Hexa

Hexagonal vinyl tile that expresses the texture of natural stone with a subtle gradation. The edges of each vinyl tile are slightly rounded for more realistic impression.



Shredded Paper (MBE-536)



Woven Fabric (MBE 520 - 525)





# Ptile

Since its introduction in 1953, Ptile consistently proven to be one of the most durable flooring material we ever created.

## Why Ptile?

Usually highly durable vinyl flooring are manufactured as single layer sheet. But when you want a truly expressive design, tiles and plank are usually the answer.

It got us thinking, what if we produce different colour batches, cut them up and arrange them in different colours? Boom Ptiles!

There is also another benefit of vinyl tile over any other flooring material. Whenever a single tile gets broken, old tile can just be peeled off and the newer one glued as its replacement.





**Ptile**, Vinyl Tile  
that Withstood The  
Test of Time.

## Numazu Factory of Tosho Printing Co., Ltd.

Located in a pristine nature of Suruga Bay and Mt. Ashitaka, this factory was completed in 1955 to improve the printing and bookbinding technology of postwar Japan. Designed by Kenzo Tange, an architect who was active both in Japan and overseas.

Tange san is a firm believer of "Bright Factory" Japanese architecture concept focused solely on the wellbeing of workers. Sunlight enters and the wind passes through, a completely new image for any factory at that time.







Under continuous movement of heavy machineries or perhaps paper punch being accidentally dropped, ceramic will shatter causing uneven floor and high risk of slipping.

Tosho Printing Company used Ptile for this exact reason. **When exposed to enormous impact, Ptile will undergo elastic deformation. Dented instead of shattering.**

Ptile have supported metal shelves that store a large amount of paper and withstood 24 hours of daily forklift traffic.







After more than 50 years of operation with 24 hours of continuous daily forklift traffic. This is the condition of Ptile in Tosho Printing Company's Factory.





In response to changing times, colorful design are now available, making it possible to create impressive spaces with upbeat colours.

